

T712

MATERIAL HANDLER



70 YEARS OF EXPERIENCE,
A DRIVING FORCE,
DESIGNED FOR THE FUTURE

TABARELLI



ANNIVERSARY
YEAR
1949 - 2019





T712

WHEELED INDUSTRIAL MATERIAL HANDLER

Maximum Control



> Stability and Balance

The lifting force must be balanced and supported by a suitable structure. The T712 has both of these features. The large ballast on the turret and the counterweights on the undercarriage give the material handler excellent stability. Furthermore, the possibility of setting up the frame in different configurations makes the operator's work safer and easier.

> Control and Comfort

The material handler must perform rapid and precise movements at the same time to increase its productivity, avoiding to cause jolts and tears that affect comfort, stability and load pick-up. The "load sensing" hydraulic system of the T712 with electronic loading capacity control and the right fine-tuning of the various components, from the manifold to the valves and servo controls, allow for perfectly progressive and controlled movements from minimum to maximum speed.

> Reliability and Maintenance

The ability to perform maintenance operations in an easy and timely manner is important for the proper operation of a machine and to ensure reliability. For this reason, access to T712 main maintenance points has been kept as comfortable as possible. Furthermore, the instruments report on the display the scheduled maintenance timelines, facilitating their execution in the correct time.

THE SUITABLE MATERIAL HANDLER FOR THOSE WHO LOVES CONTROL IN ANY SITUATION!

More than **70 years of experience** in the design and manufacture of wheeled **material handlers** for the collection and handling of ferrous scrap, metals and industrial waste is the best guarantee of a proven historical reliability.

All our material handlers have been designed and manufactured to ensure: great ease of use, low maintenance and **high production performance**.



UNBEATABLE CONTROL → AND POWER

A material handler suitable for all situations

A powerful material handler for which the user can choose whether to exploit its strength or the ability to extend the booms at significant lengths safely, by combining the different boom and frame options.

These features make the T712 a material handler suitable for all situations, where the highest performance is required. In this machine, the power and the efficiency of the “common rail” injection engine merges with the electronic management of the “load sensing” hydraulic system, completed by the additional functions provided by the instruments. All this to allow the operator to make the most of its potential.



Repair kit for quick engine maintenance



New hydraulically elevating cab with pantograph movements

THE FULL AND TOTAL CONTROL → OF PERFORMANCE



The T712 also features total performance control, in addition to power. The counterweights in the undercarriage and the ballast of generous dimensions allow the T712 to reach a considerable range of action while maintaining excellent stability even when working on tyres. The hydraulically elevating cab with pantograph movements with eye level up to 5.8 m from ground, and the adjustable hydraulic suspension allow the operator to have complete visibility of the loading area and to make the most of machine's performance.



14 TON



32-35 TON

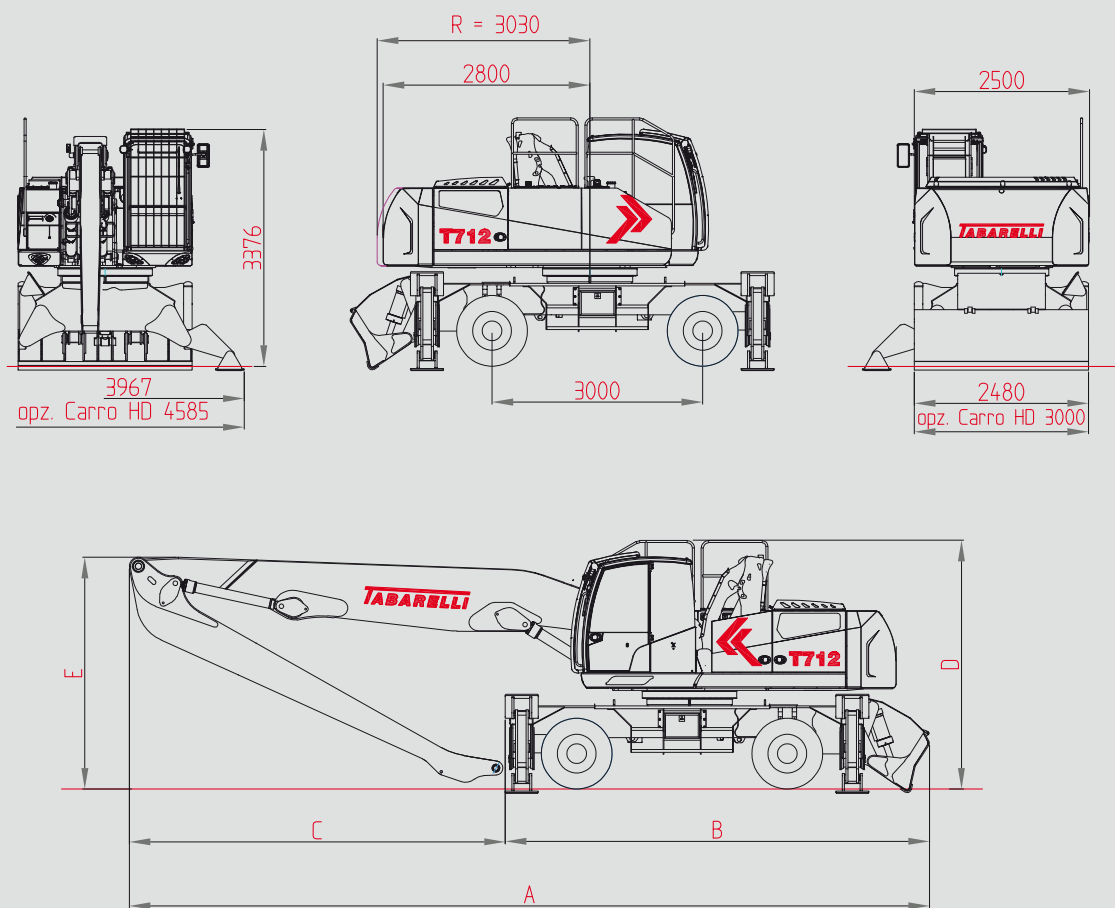


175 HP



11,3-13,3 M

DIMENSIONS



dimensions mm	11,3 m version			12,5 m version			13,3 m version		
	Q⊥	⊥⊥	Q⊥⊥	Q⊥	⊥⊥	Q⊥⊥	Q⊥	⊥⊥	Q⊥⊥
A	10440	10330	10790	11050	10940	11410	11050	10930	11400
B	5690	5570	6040	5690	5570	6040	5690	5570	6040
C	4750	4750	4750	5360	5370	5370	5360	5360	5360
D		3550			3550			3550	
E		3330			3320			3320	

EQUIPMENT

> STANDARD

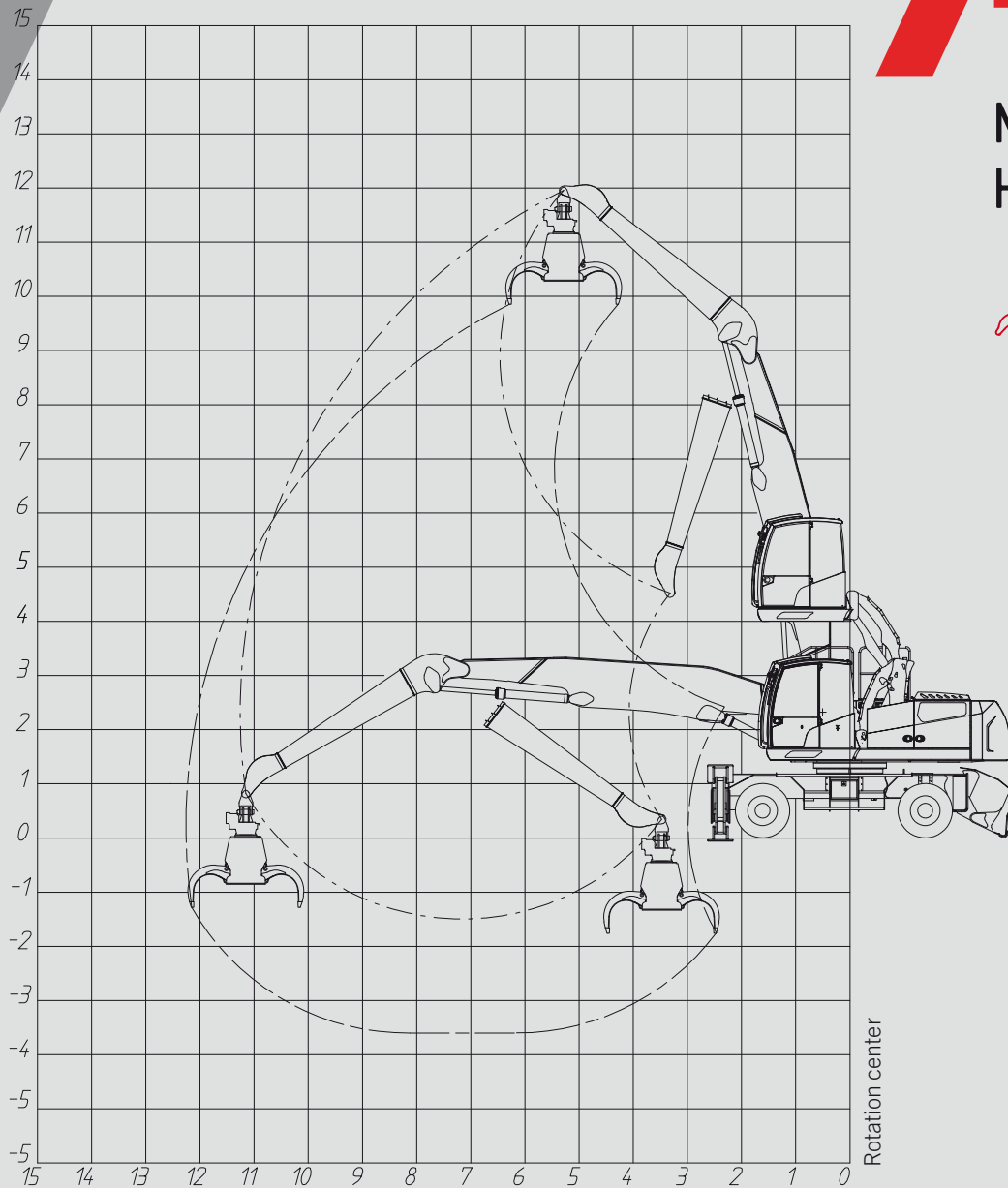
- > Radio with loudspeaker
- > 5 LED lights
- > Front blade
- > 4-wheel drive
- > 2-speed gearbox
- > Electric or hydraulic steering system
- > Super-elastic solid tires
- > Intermediate rubber rings
- > Two-pieces boom with secondary one monolithic, total length 11,3 m
- > Hydraulic lifting cab
- > Air conditioning
- > 2 Rear outriggers

< OPTIONAL

- < Automated greasing system
- < Magnetic lifting system
- < Two- pieces boom with secondary one monolithic, total length 12,5 m
- < Two- pieces boom with secondary one monolithic, total length 13,3 m
- < Undercarriage with 4 outriggers
- < Undercarriage with 4 outriggers and frontal blade
- < Elevating cab with "FlyCab" system - view up to 6 meters height
- < "HD" undercarriage with reinforced structure and 3m width

T712

MATERIAL HANDLER



LIFTING CAPACITY

Height	Undercarriage configuration															
10,5								5,4	5,4	4,7						
9,0								5,4	5,4	4,7						
7,5								5,2	5,2	4,5	4,9	4,9	4,3			
6,0								5,2	5,2	4,5	4,9	4,7	3,5			
4,5								5,3	5,3	4,6	4,9	4,9	4,3			
3,0								5,3	5,3	4,6	4,9	4,7	3,5			
1,5					6,4	6,4	5,6	5,6	5,6	4,9	5,1	5,1	4,4	4,7	4,7	4,1
0,0					6,4	6,4	5,6	5,6	5,6	4,6	5,1	4,6	3,4	4,7	3,6	2,7
-1,5																

12,5 m



T712

MATERIAL HANDLER

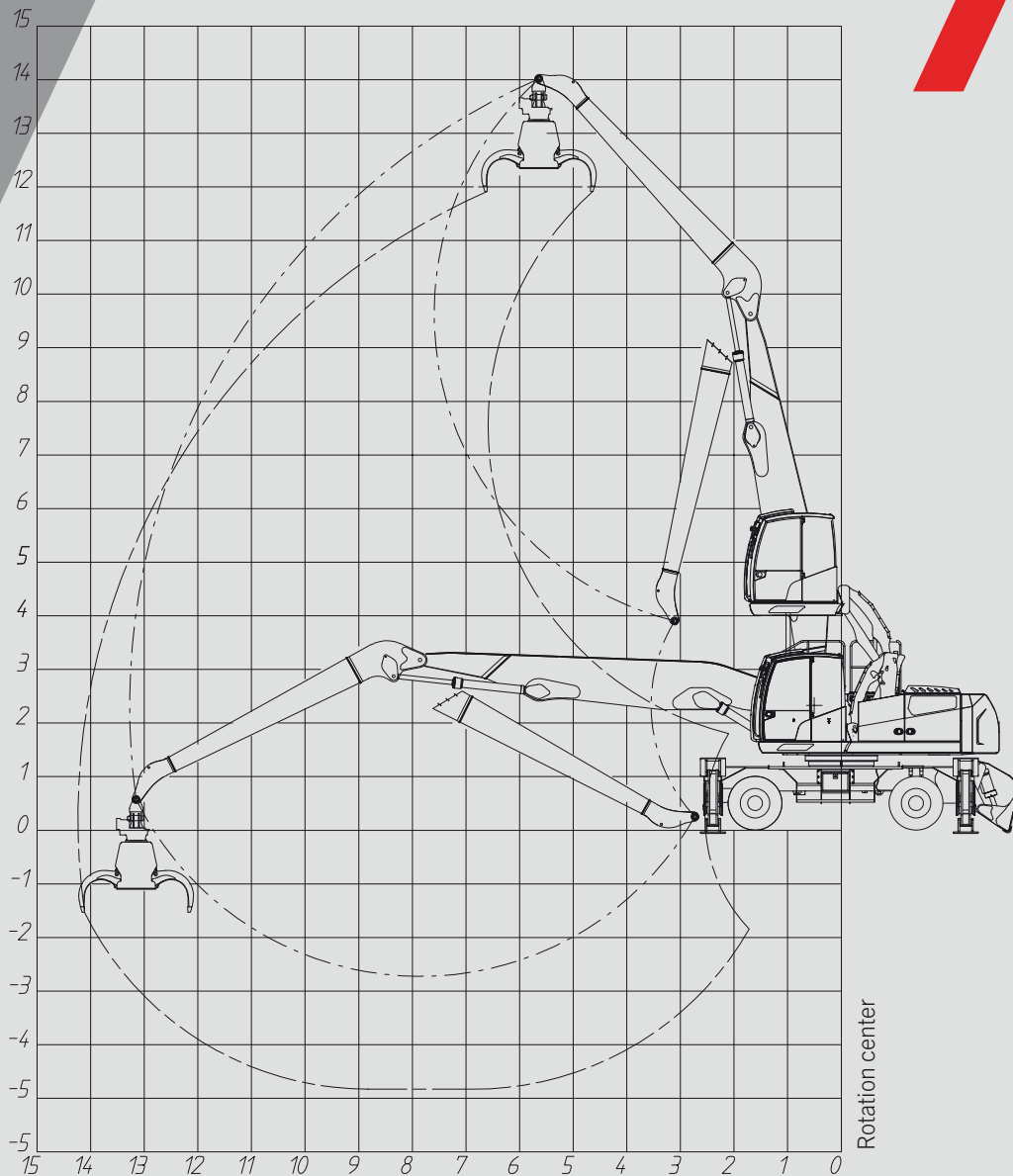
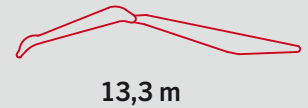


DIAGRAM OF MOVEMENTS

LIFTING CAPACITY

13,5								5,1	5,1	4,5																		
12,0											4,3	4,3	3,8															
10,5											4,1	4,1	3,6	3,9	3,9	3,4												
9,0											4,1	4,1	3,5	3,8	3,8	3,3	3,7	3,7	3,2									
7,5											4,1	4,1	3,5	3,8	3,8	3,3	3,7	3,6	2,7									
6,0											4,2	4,2	3,6	3,9	3,9	3,4	3,7	3,7	3,2									
4,5								5,0	5,0	4,3	4,4	4,4	3,8	4,0	4,0	3,5	3,7	3,7	3,2									
3,0								5,0	5,0	4,3	4,4	4,4	3,8	4,0	4,0	3,4	3,7	3,6	2,7									
1,5		11,1	11,1	9,7	6,7	6,7	5,8	5,5	5,5	4,8	4,7	4,7	4,1	4,2	4,2	3,7	3,8	3,8	3,3									
0,0		11,1	11,1	9,7	6,7	6,7	5,8	5,5	5,5	4,8	4,7	4,7	4,1	4,2	4,2	3,3	3,8	3,5	2,6									
-1,5		13,2	13,2	11,5	8,9	8,9	7,7	6,7	6,7	5,9	5,5	5,5	4,8	4,7	4,7	4,1	4,1	4,1	3,6	3,5	3,5	3,1						
		13,2	13,2	10,3	8,9	8,9	6,8	6,7	6,6	5,0	5,5	5,1	3,8	4,7	4,1	3,0	4,1	3,3	2,5	3,3	2,6	2,0						
		14,2	14,2	12,3	9,6	9,6	8,3	7,2	7,2	6,3	5,8	5,8	5,0	4,9	4,9	4,2	4,2	4,2	3,6									
		14,2	12,9	9,7	9,6	8,5	6,4	7,2	6,3	4,7	5,8	4,9	3,7	4,9	3,9	2,9	4,1	3,2	2,4									
					9,8	9,8	8,5	7,4	7,4	6,4	5,9	5,9	5,2	4,9	4,9	4,3	4,2	4,2	3,6									
					9,8	8,2	6,2	7,4	6,0	4,5	5,9	4,7	3,5	4,8	3,8	2,9	4,0	3,2	2,4									
RANGE OF ACTION		4,0			5,5			7,0			8,5			10,0			11,5			13,3								

The values, expressed in ton, are to be considered: at the hook without lifting elements applied; with the machine fixed on a flat, horizontal and stable surface, with the oscillating axle locked.

Maximum longitudinal loading capacity Maximum range at 360° Loading capacity ISO 10567

ON WHEELS BLADE +2 OUTRIGGERS 4 OUTRIGGERS BLADE +4 OUTRIGGERS

NOTE: data and weights are indicative and not binding: Tabarelli reserves the right to make the changes it deems appropriate.

TECHNICAL SPECIFICATIONS

ENGINE CUMMINS

Model	4-cycle diesel, inline 4-cylinder, turbo-charged EU STAGE V / U.S. TIER 4F (with AdBlue)
Displacement	4,5 l
Cooling	water-cooled
Max. power	129 kW (175 HP)
Injection	Electronic system
Air filter	Two-stage dry filter with integrated pre-separator
Tank capacity	300 l
AdBlue tank capacity	25 l
Electrical system	24 V
Batteries	2x115 Ah
Engine speed adjustment	continuous, with sensor-controlled Auto Idle system

HYDRAULIC SYSTEM

Main pump	variable displacement axial-piston pump and oil flow adjustment according to load requirements
Delivery rate	440 l/min
Max operating pressure	320 Bar
Heat exchanger	Water/air/oil with overlapping elements with inverted flow fan controlled by a dedicated hydraulic pump for cooling and cleaning of radiant mass
Adjustment	Load Sensing with electronic management of the power consumption according to the engine speed set. All movements can be run in parallel without mutual influence
Filtration	complete return filter to the tank
Hydraulic tank capacity	450 l

SLEWING DRIVE

Motor	with axial pistons with load sensing and integrated pressure relief valves
Gearbox	2-stage reduction planetary gearbox
Slewing ring	double-row ball bearing slewing ring, made of special steel with hardened inner gear
Slewing speed	0-7 rpm

CAB

Operator's Cab	spacious and comfortable, heated, soundproofed, with hydraulic pantograph lifting system. Working position with a view up to 5,8 meters height from the ground. Air conditioning system with 3-speed fan and adjustable vents with dust pre-filter. Front grille guard and n. 5 LED work lights
Drive	electric control with joysticks or hydraulic drive with steering wheel
Seat	"GRAMMER" "gran comfort" with 6 settings and weight-adjustable suspension
Dashboard	Wide colour display with text and graphic symbols to control the main machine functions, alarms and data.
Main cross-motion servo-controls	multifunction armrest with cross joystick
Shift	2-levers pedal
Auxiliary Movements Control	electric and electric-hydraulic control

BOOM

Structure	made of high-strength steel
Length	from 11,3 to 13,3 meters optional
Bushings and pins	made of special steel for concrete
Cylinders	double cylinders on 1st and 2nd boom with hydraulic brake
Regenerative valves	regenerative valves for the recovery of hydraulic oil during cylinders' movement. When boom cylinders are being opened, the hydraulic oil on the rod side is reused and put back into the circuit, increasing the efficiency of the boom and the working speed. Thanks to these valves, it is possible to balance the speed of both booms in order to make smoother movements, facilitating the work for the operator. With this system the hydraulic oil heating is reduced, for the benefit of the system.

UNDERCARRIAGE

Shifting	hydraulic axial piston motor with starting and braking control valve
Drive	2-speed transmission with electro-hydraulic control
Axles	Four-wheel drive with strong steering axles and planetary gearbox in the hubs. Steering and oscillating front axle with integrated hydraulic locking cylinders
Rims	8.00/20 with 10 holes
Tires	8 super-elastic solid tyres 10.00/20
Brake	parking brake
Speed	Stage I: 0-5 km/h Stage II: 0-15 km/h
Outriggers	2-point, rear, with 90° opening and articulated foot and chrome-plated rod guard. Max width of the bearing surface 3,97 m
Blade	1-front blade with stabilizer function

WEIGHT from 32 to 35 ton in working order

RECOMMENDED EQUIPMENT Grab for waste model **RR800 with 5 blades**
Grab for scrap model **RV550 with 6 blades**
Grab for scrap model **RV600 with 6 blades**

SOUND LEVEL **NOISE REDUCTION** (Dir 2000/14/CE - 2005/88/CE)
Sound pressure level at driving position LpA 77 dB (A)

MOVEMENT METER **MACHINERY DIRECTIVE** (Dir 2006/42/CE)
Electronic monitoring device for the stability of the machine according to the loads moved and their position with warning of danger by means of acoustic and light signals, blocking of movements upon reaching of stability limits.

The manufacturer reserves the right to make changes to the products or their specifications.

→T712



OFFICINA MECCANICA F.LLI TABARELLI S.P.A.

VIA CARLO ALBERTO DALLA CHIESA, 2

37060 - MOZZECANE (VR) - ITALY

TEL. +39 045 7930007 FAX +39 045 7930214

INFO@TABARELLI.COM WWW.TABARELLI.COM

gasweb.it

TABARELLI
FOR A BETTER WORK

