

T207

MATERIAL HANDLER



75 YEARS OF EXPERIENCE,
A DRIVING FORCE,
DESIGNED FOR THE FUTURE

TABARELLI





T207

WHEELED INDUSTRIAL MATERIAL HANDLER

Agile and Adaptable to any situation





> Agile

The compact dimensions of this model guarantee agility and dexterity in movements, without taking away stability, power and comfort from the operator. The carefully designed lightness of the machine allows working at a greater transfer speed, which actually completes and makes the offer unique.

> Efficient

The new T207 is designed with the innovative environmentally friendly Tier5 engine: small but with outstanding performance, without the need to use AdBlue additive, it guarantees reduced emissions into the atmosphere. This perfect combination ensures maximum work efficiency and full respect for the environment.

> Versatile

The new model, which is particularly suitable for confined spaces, also performs well in larger spaces: the possibility of fitting the arm with an extension, in fact, makes the T207 even more versatile. This feature, combined with its lightness and power, makes this machine adaptable to any situation.

THE INNOVATIVE ENVIRONMENTALLY FRIENDLY TIER5 ENGINE GUARANTEES REDUCED EMISSIONS INTO THE ATMOSPHERE

More than **75 years of experience** in the design and manufacture of wheeled **Material Handlers** for the collection and handling of ferrous scrap, metals and industrial waste are the best guarantee of a proven historical reliability.

All our material handlers have been designed and manufactured to offer you: great ease of use, low maintenance and **high production performance**.



MAXIMUM WORK EFFICIENCY > AND FULL RESPECT FOR THE ENVIRONMENT

The product range is expanding to meet all our customers' needs.

The new T207 handler has been designed for smaller settings, which still require power and precision work.



Direct access for hydraulic maintenance



Fully inspectable engine compartment for quick maintenance

SUITABLE FOR CONFINED >SPACES



Designed to be smaller and more dynamic, it ensures reliable operations and offers a comfortable seat for the operator.

If you are looking for an agile, efficient and versatile handler, this is for you!



5 TON



16 TON

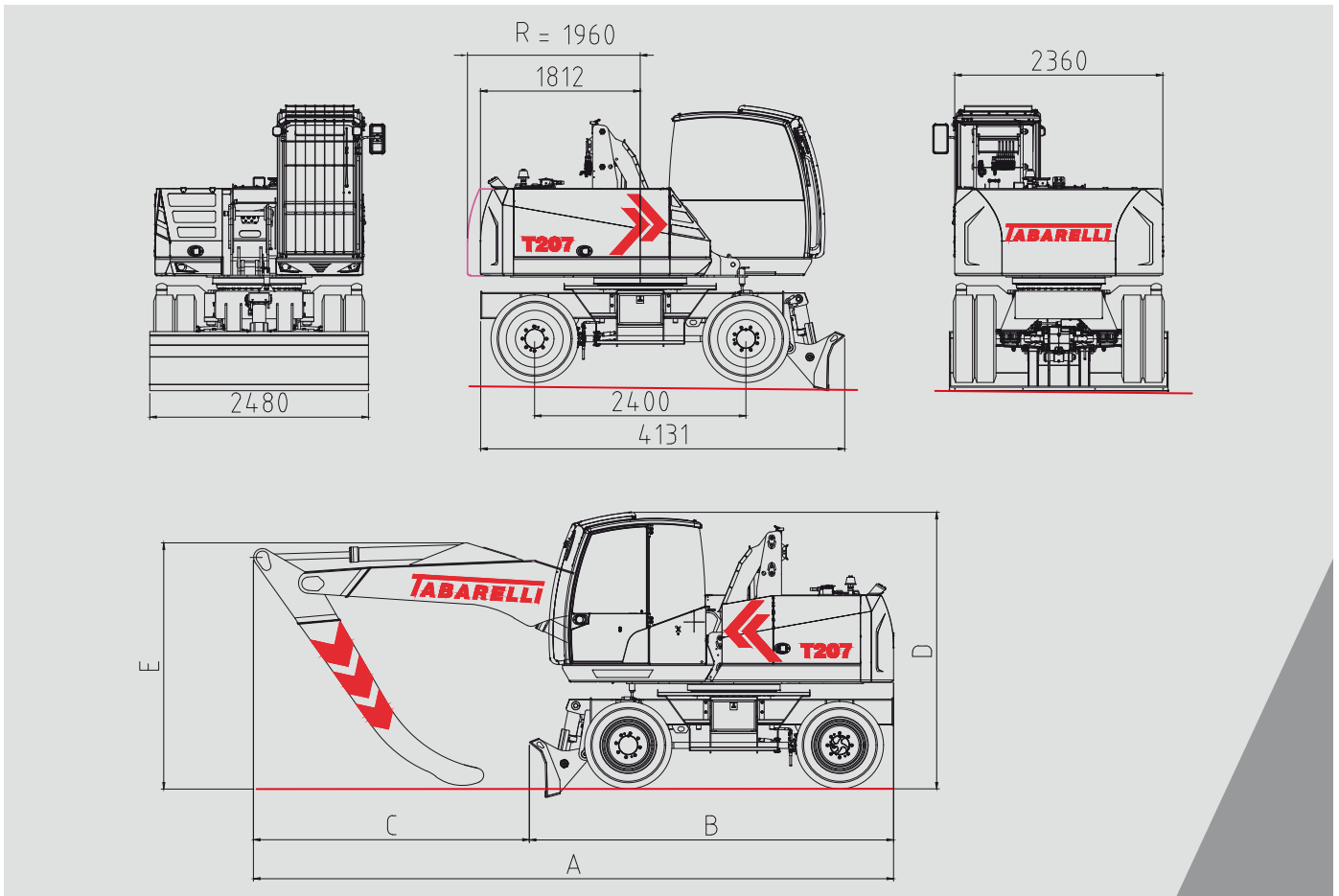


75 HP



7,5-8,2 M

DIMENSIONS



dimensions mm	7,5 m version	8,2 m version
A	7265	7570
B	3950	3950
C	3315	3620
D	3140	3140
E	2815	2795

> STANDARD EQUIPMENT

- > Radio with loudspeaker
- > 5 LED lights
- > Front shovel
- > Four-wheel drive
- > Two-speed gearbox
- > Electric or hydraulic steering system
- > 8 superelastic solid tires
- > Intermediate rubber rings
- > Two-pieces boom with secondary one monolythic, total length 7.5m
- > Hydraulic lifting cab
- > Air conditioning
- > Automatic greasing system

< OPTIONAL

- < 2 rear outriggers
- < Magnetic lifting system
- < Two-pieces boom with hydraulic extension, total length 7.5m
- < Two-pieces boom with secondary one monolythic, total length 8.2m

T207

MATERIAL HANDLER

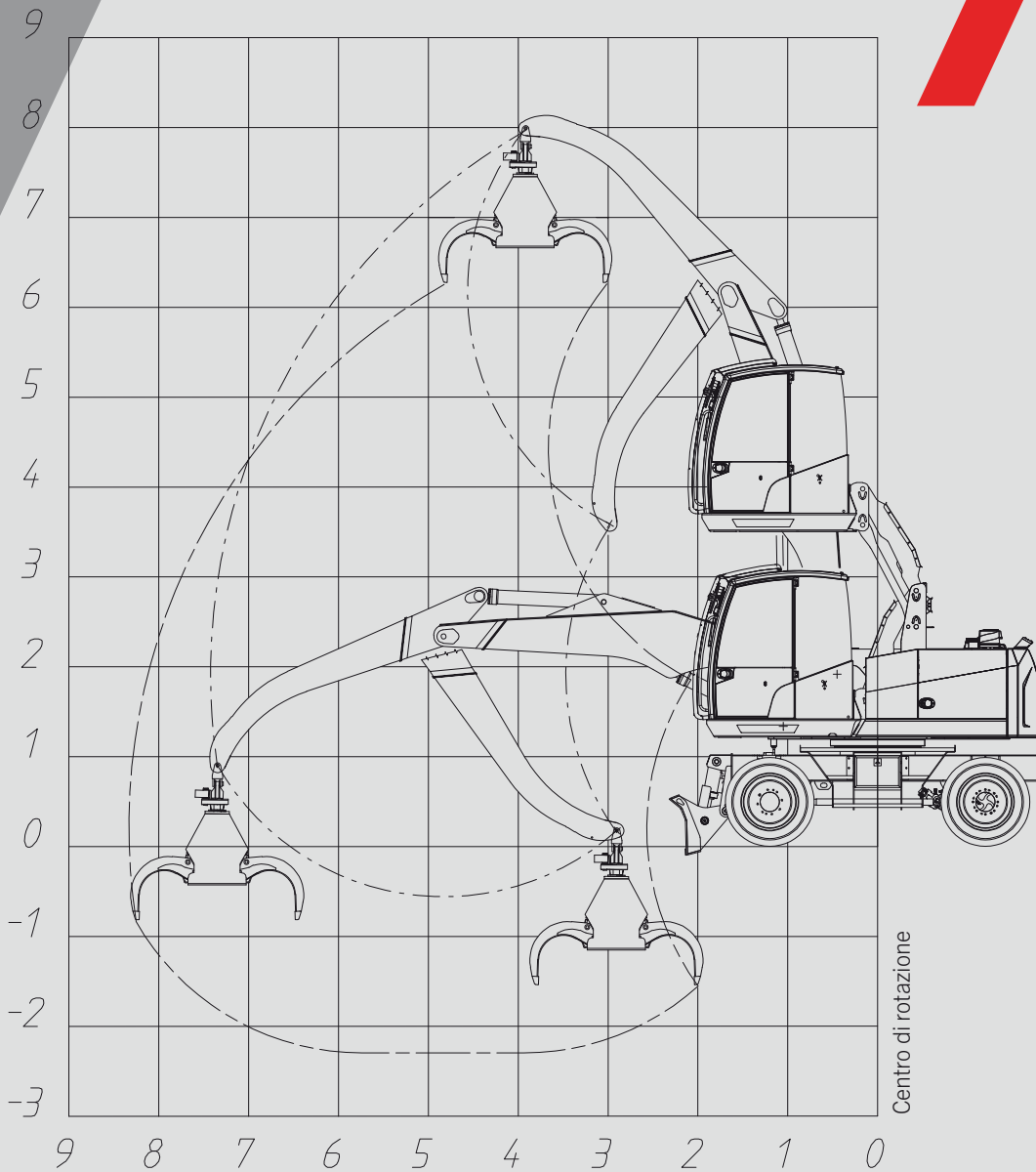


DIAGRAM OF MOVEMENTS

HOOK LIFTING CAPACITY

altezza	assetto	↙ ○ ●			↙ ○ ●			↙ ○ ●			↙ ○ ●			↙ ○ ●		
		↙	○	●	↙	○	●	↙	○	●	↙	○	●	↙	○	●
8,0	○○	4,2	4,1	3,1												
	○○	4,2	3,7	2,8												
7,0	○○				3,5	3,0	2,2									
	○○				3,4	2,7	2,0									
6,0	○○				3,4	3,0	2,2	3,1	2,3	1,7						
	○○				3,4	2,7	2,0	2,6	2,1	1,6						
5,0	○○				3,5	3,0	2,2	3,1	2,3	1,7	3,0	2,1	1,5			
	○○				3,4	2,7	2,0	2,6	2,1	1,6	2,3	1,9	1,4			
4,0	○○	4,4	4,0	3,0	3,7	2,9	2,2	3,2	2,3	1,7	3,0	2,0	1,5			
	○○	4,4	3,6	2,7	3,4	2,7	2,0	2,6	2,1	1,6	2,3	1,9	1,4			
3,0	○○	4,9	3,9	3,0	3,9	2,9	2,2	3,3	2,3	1,7	3,1	2,0	1,5	2,7	1,7	1,3
	○○	4,6	3,6	2,7	3,3	2,6	2,0	2,6	2,1	1,5	2,3	1,8	1,4	1,9	1,6	1,2
2,0	○○	5,3	3,9	2,9	4,1	2,8	2,1	3,4	2,2	1,7	3,1	2,0	1,5	2,7	1,7	1,3
	○○	4,5	3,5	2,6	3,3	2,6	1,9	2,5	2,0	1,5	2,3	1,8	1,4	1,9	1,5	1,2
1,0	○○	5,4	3,8	2,8	4,2	2,8	2,1	3,4	2,2	1,7	3,1	2,0	1,5	2,5	1,7	1,3
	○○	4,4	3,4	2,6	3,2	2,5	1,9	2,5	2,0	1,5	2,3	1,8	1,4	1,9	1,5	1,2
0,0	○○	5,2	3,8	2,8	4,1	2,8	2,1	3,2	2,2	1,6	2,9	2,0	1,5			
	○○	4,4	3,4	2,5	3,2	2,5	1,9	2,5	2,0	1,5	2,3	1,8	1,4			
RANGE OF ACTION		4,0			5,0			6,0			6,5			7,4		

The values, expressed in tonnes, are to be considered: at the hook without lifting elements applied; with the machine fixed on a flat, horizontal and stable surface, with the oscillating axle locked.

↙ Maximum longitudinal loading capacity ○ Maximum range at 360° ● Loading capacity ISO 10567 ○○ ON WHEELS ◻○ BLADE + WHEELS

NOTE: data and weighs are indicative and not binding: Tabarelli reserves the right to make the changes it deems appropriate.

T207

MATERIAL HANDLER

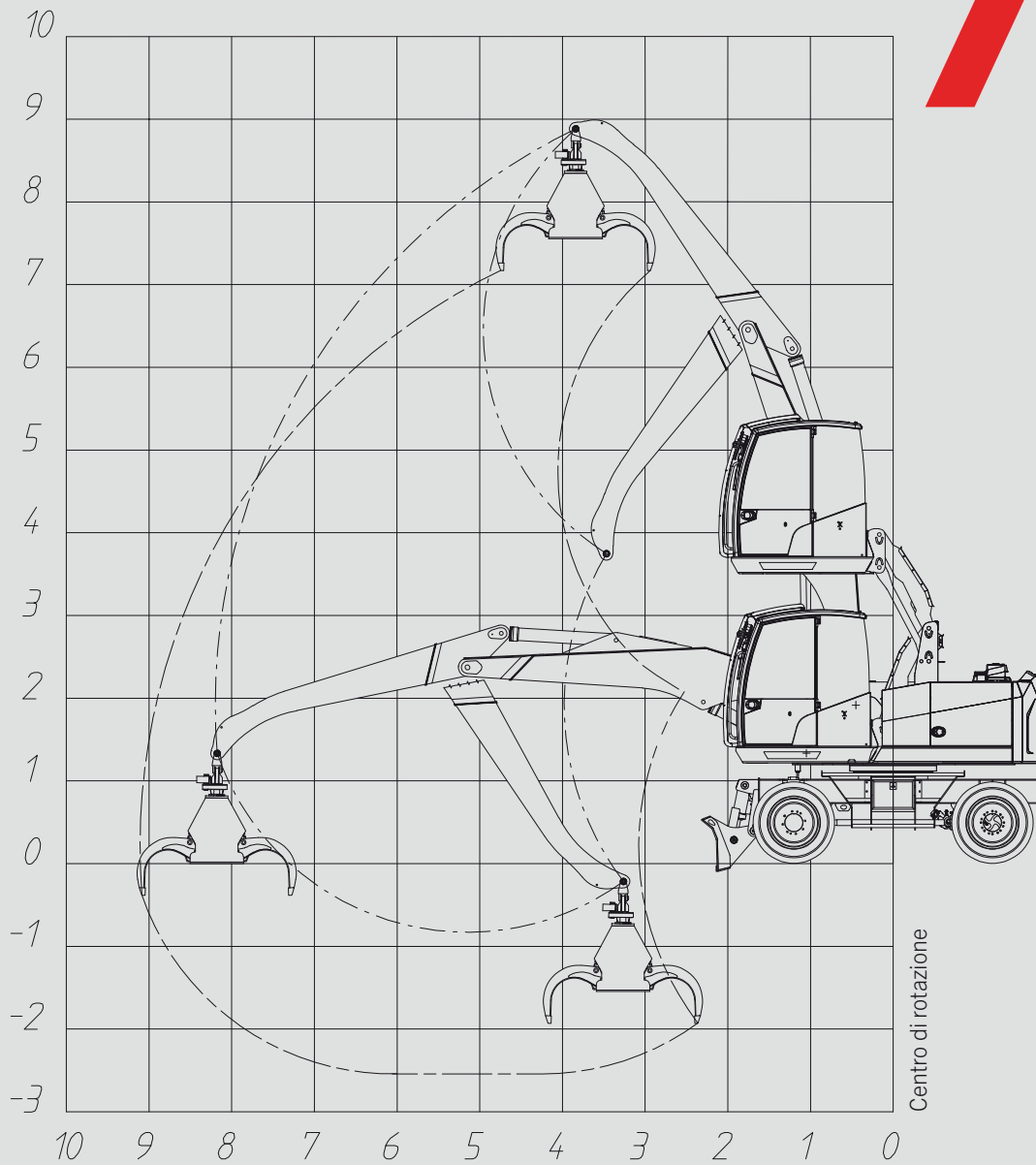
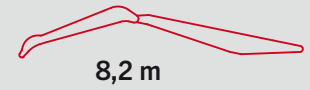


DIAGRAM OF MOVEMENTS

HOOK LIFTING CAPACITY

altezza	assetto	3,0m			4,0m			5,0m			6,0m			7,0m			8,2m		
		↔	○	●	↔	○	●	↔	○	●	↔	○	●	↔	○	●	↔	○	●
8,0	○○	3,3	2,9	2,2															
	○○	3,3	2,6	2,0															
7,0	○○				2,8	2,2	1,7												
	○○				2,6	2,0	1,5												
6,0	○○	3,1	3,0	2,2	2,8	2,3	1,7	2,6	1,8	1,3									
	○○	3,1	2,7	2,0	2,6	2,1	1,5	2,0	1,6	1,2									
5,0	○○	3,2	2,9	2,2	2,9	2,2	1,7	2,6	1,8	1,3	2,4	1,6	1,2						
	○○	3,2	2,7	2,0	2,6	2,0	1,5	2,0	1,6	1,2	1,8	1,5	1,1						
4,0	○○	3,4	2,9	2,2	2,9	2,2	1,7	2,6	1,8	1,3	2,4	1,6	1,2						
	○○	3,3	2,6	2,0	2,5	2,0	1,5	2,0	1,6	1,2	1,8	1,4	1,1						
3,0	○○	3,6	2,8	2,1	3,0	2,2	1,6	2,6	1,7	1,3	2,4	1,6	1,2						
	○○	3,2	2,5	1,9	2,5	2,0	1,5	2,0	1,6	1,2	1,8	1,4	1,1						
2,0	○○	3,8	2,7	2,0	3,1	2,1	1,6	2,6	1,7	1,3	2,4	1,6	1,2	2,2	1,4	1,0			
	○○	3,1	2,4	1,8	2,4	1,9	1,4	2,0	1,6	1,2	1,8	1,4	1,1	1,6	1,3	0,9			
1,0	○○	3,9	2,6	2,0	3,1	2,1	1,6	2,6	1,7	1,3	2,4	1,5	1,2	2,1	1,4	1,0			
	○○	3,1	2,4	1,8	2,4	1,9	1,4	1,9	1,5	1,1	1,8	1,4	1,0	1,6	1,3	0,9			
0,0	○○	3,8	2,6	1,9	3,0	2,0	1,5	2,4	1,7	1,3									
	○○	3,0	2,3	1,7	2,4	1,8	1,4	1,9	1,5	1,1									
RANGE OF ACTION		5,0			6,0			7,0			7,5			8,2					

The values, expressed in tonnes, are to be considered: at the hook without lifting elements applied; with the machine fixed on a flat, horizontal and stable surface, with the oscillating axle locked.

↔ Maximum longitudinal loading capacity ○ Maximum range at 360° ● Loading capacity ISO 10567 ○○ ON WHEELS ◻○ BLADE + WHEELS

NOTE: data and weighs are indicative and not binding: Tabarelli reserves the right to make the changes it deems appropriate.

T207

**MATERIAL
HANDLER**



TECHNICAL SPECIFICATIONS

MOTOR DEUTZ (without AdBlue)

Type	Diesel 4-stroke, straight-four cylinder, turbocharged STAGE V
Displacement	3.6l
Cooling	With liquid
Max Power	55 kw (75hp)
Injection	Electronic system
Air filter	2-stage dry with pre-filter
Tank capacity	170l
Electrical system	24v
Battery	2x115ah
Motor speed adjustment	Accelerator with graduated potentiometer

HYDRAULIC SYSTEM

Main pump	axial piston pump and variable flow rate with pressure cut off and oil supply function as required
Max flow rate	160 l/min
Max pressure	280 bar
Adjustment	Load sensing with constant power regulator and pressure cut-off function Combined (air-water on motor side/hydraulic oil side) with bypass valve and
Heat exchanger	hydraulic reverse flow fan for heat exchanger cleaning
Filter	Partial flow on return to tank
Tank capacity	250l

TURRET ROTATION

Motor	Radial piston with load sensing distributor element and safety valves
Gearbox	Planetary
Fifth wheel	double-row ball bearing slewing ring made of special steel, with hardened inner gear
Rotation speed	0-8 rpm

CAB

Operator cab	Spacious and comfortable, heated, soundproof, with hydraulic scissor lifting system. Operator visual range 5.2 meters from the ground
Guide rail	Push-button electric system on servo or power steering
Seat	GRAMMER "gran comfort" with 6 settings and weight-adjustable suspension
Dashboard	Wide colour display with text and graphic symbols to control the main machine functions, alarms and data
Main cross-motion servo-controls	Built into the armrests with cross movement
Travel control	2-lever pedal
Movimenti ausiliari	Electric and electric-hydraulic control

UNDERCARRIAGE

Shifting	Axial piston motor with starting and braking control valve
Change	2-speed with electro-hydraulic control
Axles	Two-wheel drive with large industrial axles and planetary gearbox in the hubs. Front oscillating steering axle with hydraulic locking cylinders
Rims	8-hole, 6.50/20
Tires	8 super-elastic solid tyres 8.25/20
Brake	Disc parking

UNDERCARRIAGE

Speed

1^ 0-3 km/h

2^ 0-12 km/h

Blade 1 front blade with stabilizer function

Stabilisers without stabilizers (2 optional rear hydraulic stabilizers)

BOOM

Structure Steel, monolithic high-strength, in 2 elements with monolithic secondary

Length 7.5 and 8.2m optional (7.5m also available with hydraulic extension)

Bushings and pins Made of special steel for concrete

Cylinders Single cylinder on the 1st and 2nd boom with hydraulic brake

EQUIPMENT Grab for waste model RR360 with 5 blades

RECOMMENDED Grab for scrap model RV320 with 6 blades

WEIGHT About 16 ton in working order

SOUND LEVEL **NOISE REDUCTION** (Dir 2000/14/CE - 2005/88/CE)

Sound pressure level at driving position LpA 77 dB (A)

MEASURING SYSTEM **MACHINERY DIRECTIVE** (Dir 2006/42/CE)

FOR MOVEMENT Electronic monitoring device for the stability of the machine according to the loads moved and their position with warning of danger by means of acoustic and light signals, blocking of movements upon reaching of stability limits.

The manufacturer reserves the right to make changes to the products or their specifications.

> T207



OFFICINA MECCANICA F.LLI TABARELLI S.P.A.

VIA CARLO ALBERTO DALLA CHIESA, 2

37060 - MOZZECANE (VR) - ITALY

TEL. +39 045 7930007

INFO@TABARELLI.COM

WWW.TABARELLI.COM

TABARELLI

FOR A BETTER WORK

