

T409-2CE

ELECTRIC
MATERIAL
HANDLER



6,5 TON



23-24 TON



1X50 KW



9,2-10 M

75 YEARS OF EXPERIENCE,
DRIVING CHANGE,
DESIGNED FOR THE FUTURE

TABARELLI





T409-2CE

ELECTRIC MATERIAL HANDLER

Working in a sustainable way



Four working speeds

Like the T308E, this model can also be used in different ways, depending on the requirements.

> Speed 1: ECO

The first speed has low energy consumption, with low speed of movement but high precision. Ideal for prolonging battery life.

> Speed 2: NORMAL

The second speed provides balanced consumption with good performance. This is the mode that is used to bring out the efficiency of the machine.

> Speed 3: DYNAMIC

The third speed is the right compromise to work with a dynamic machine and still maintain a good energy consumption.

> Speed 4: POWER

The fourth speed can be used for work requiring high performance. In such cases, the machine performs to its full capacity.

FOUR WORKING SPEEDS:
> ECO, > NORMAL,
> DYNAMIC, > POWER

More than **75 years of experience** in the design and construction of wheeled **material handlers** for the collection and handling of ferrous scrap, metals and industrial waste; our best guarantee of a proven historical reliability.

All our material handlers machines have been designed and manufactured to ensure: great ease of use, low maintenance and **high production performance**.



THE TIME FOR ELECTRIC IS NOW: > HERE IS THE NEW T409-2CE

Working in a sustainable way is becoming more and more of a necessity,

which is why the Tabarelli handler range is expanding, introducing a second electric model. The size of this machine allows the operator to work with excellent lifting capacity and stability, while maintaining low energy consumption.

The new design distinguishes it from Diesel material handler and features futuristic lines.

These are the main features that make the new T409-2CE an excellent investment to increase corporate sustainability without sacrificing performance!



New LED lights for low energy consumption



Fast batteries change for two working shifts

NEW DESIGN, >SILENT



NEW DESIGN

Studied and designed down to the smallest detail, the new design of the T409-2CE is absolutely exclusive. The cutting-edge lines that identify it convey the true character of this model: innovative and ecological. This is emphasised by the peculiarity of the LED on the rear ballast, which outlines the futuristic personality of this sustainable handler.

Overall, the new T409-2CE has an attractive design, which differentiates this electric model from the Diesel models not only in terms of technical and mechanical features, but also in terms of appearance.

SILENT

One of the advantages of having an electric material handler, in addition to reduced environmental impact and increased sustainability, is the reduction of noise during work.

Operating a very quiet machine at the end of the day makes all the difference! This is also one of the features that entices customers to approach the green world.



6,5 TON



23-24 TON

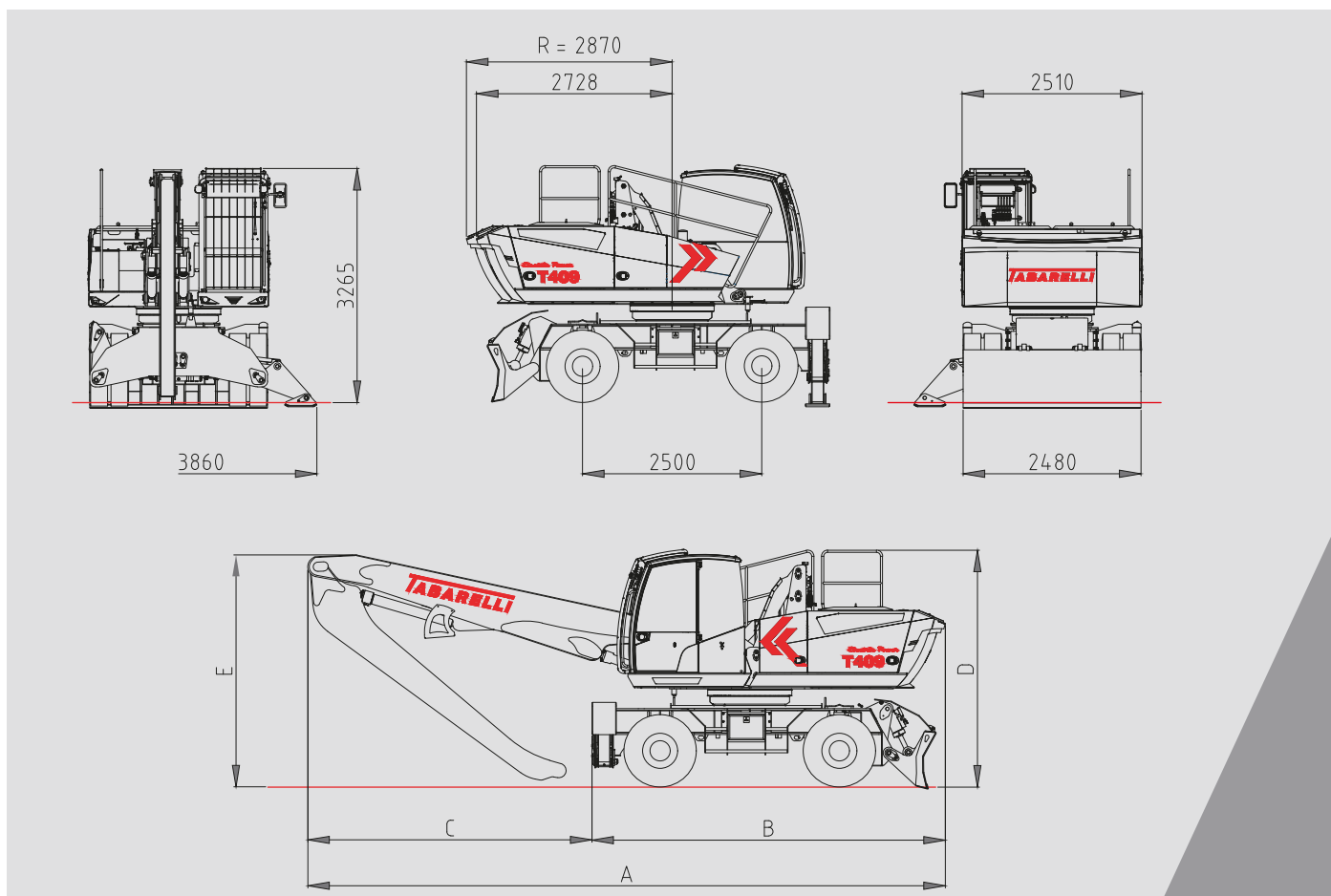


1X50 KW



9,2-10 M

DIMENSIONS



dimensions mm	9,2 m version	10 m version
A	8890	8890
B	4930	4930
C	3960	3960
D	3300	3300
E	3240	3240

> STANDARD EQUIPMENT

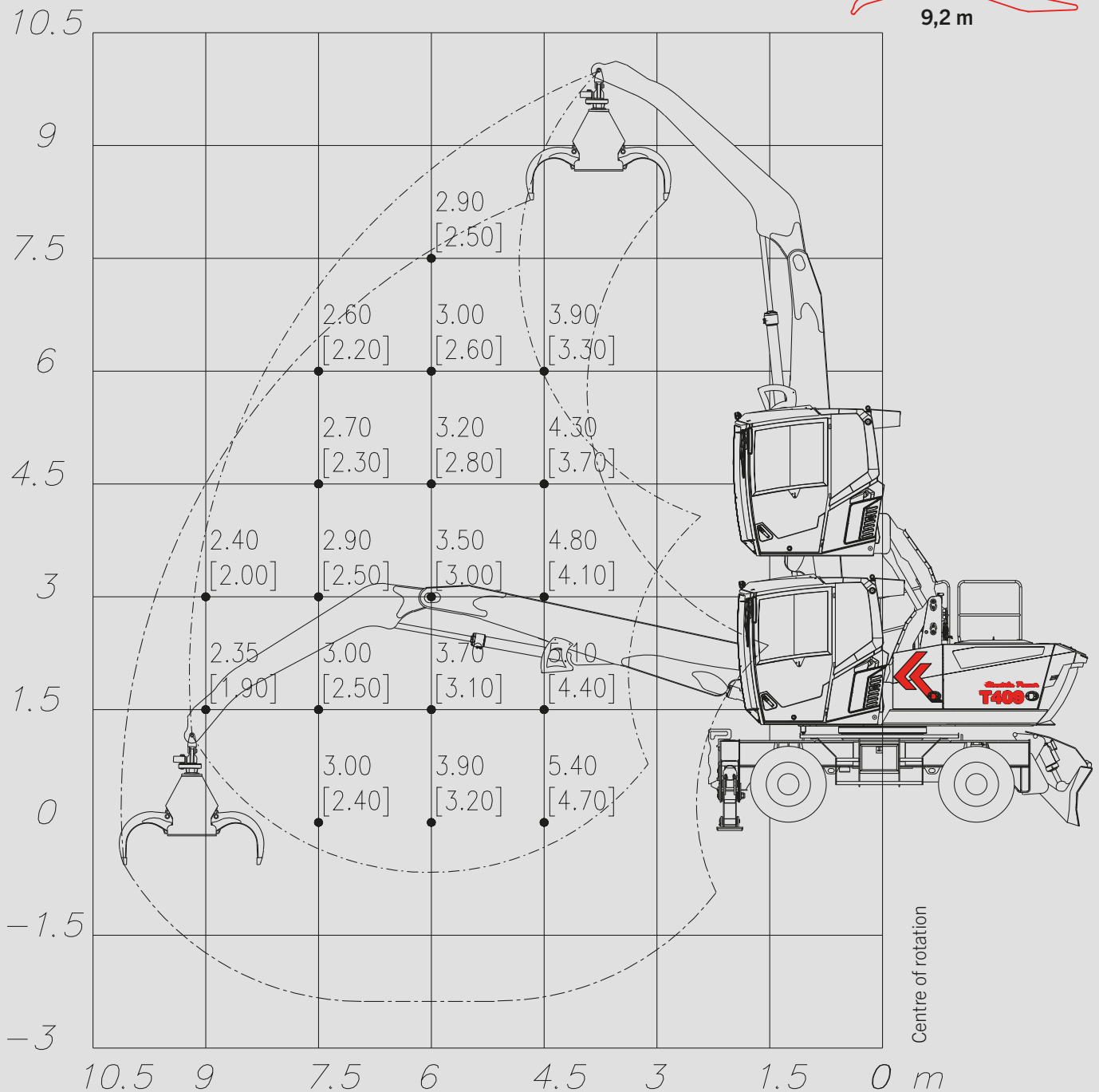
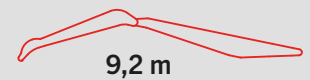
- > Radio with loudspeaker
- > 5 LED lights
- > Front shovel
- > Four-wheel drive
- > Two-speed gearbox
- > Electric steering system
- > Super-elastic solid tires
- > Intermediate rubber rings
- > Two-pieces boom with secondary one monolythic, total length 9.2m
- > Hydraulic lifting cab
- > Two rear outriggers
- > Automatic greasing system

< OPTIONAL

- < Undercarriage with 2 front + 2 rear outriggers
- < Undercarriage with 2 front + 2 rear outriggers and front shovel
- < Two-pieces boom with secondary one monolythic, total length 8.5m
- < Two-pieces boom with secondary one monolythic, total length 10.0m
- < Two-pieces selecting boom, total length 9.5m
- < Air conditioning with air-prefiltering

9,2 M BOOM MOVEMENT DIAGRAM

T409 2CE ELECTRIC MATERIAL HANDLER

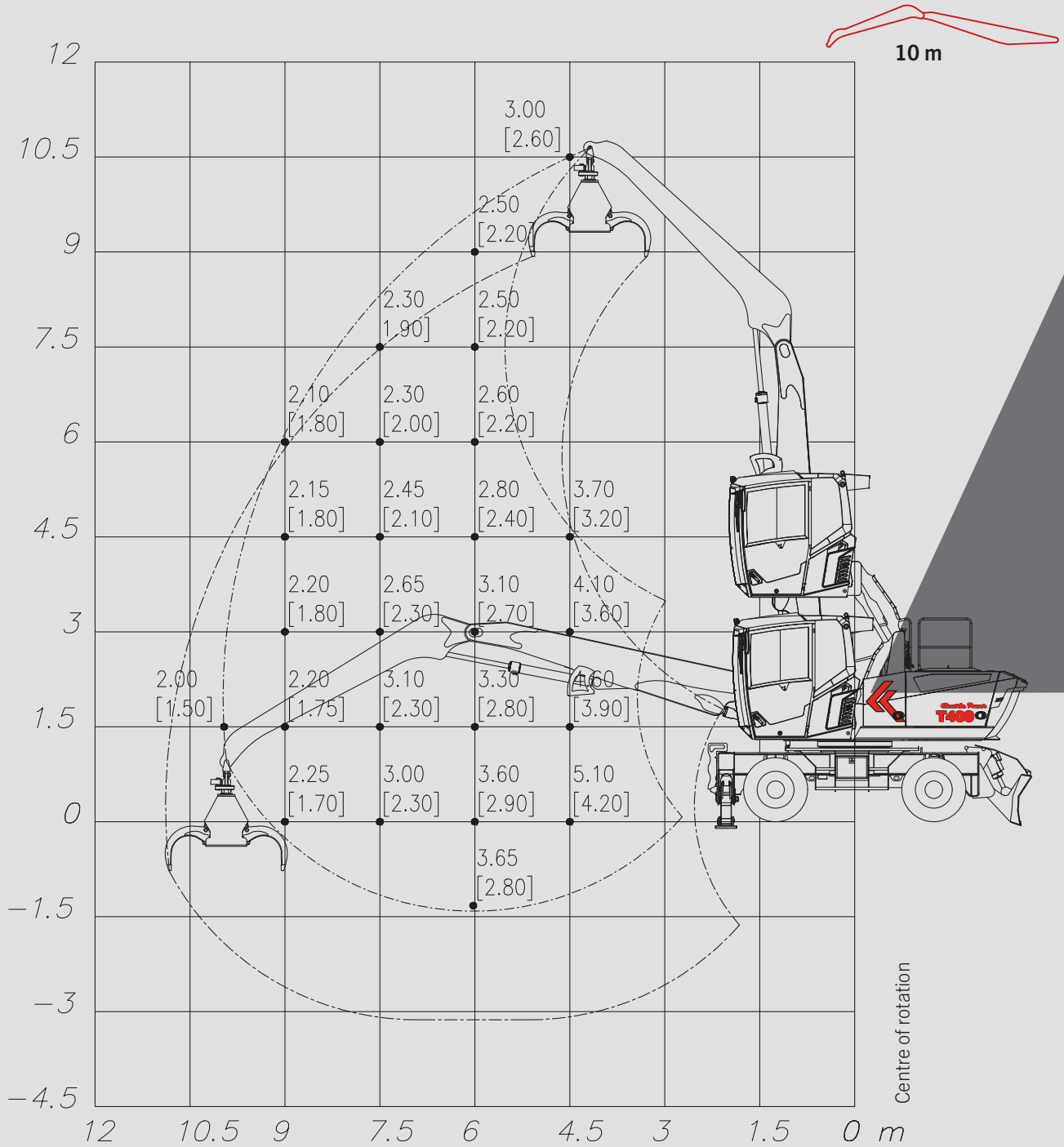


Lifting capacities are specified in tonnes and apply to the end of the half boom (excluding accessories). The value in square brackets indicates the load capacity on wheels at 360°, while the other value indicates the load capacity with the stabilisers lowered with 360° adjustment. These values correspond to 75% of the tipping load or 87% of the hydraulic lifting force, as set out in ISO 10567.

NOTE: data and weights are indicative and not binding. Tabarelli reserves the right to make any changes it deems appropriate.

10 M BOOM MOVEMENT DIAGRAM

T409 2CE ELECTRIC MATERIAL HANDLER



Lifting capacities are specified in tonnes and apply to the end of the half boom (excluding accessories). The value in square brackets indicates the load capacity on wheels at 360°, while the other value indicates the load capacity with the stabilisers lowered with 360° adjustment. These values correspond to 75% of the tipping load or 87% of the hydraulic lifting force, as set out in ISO 10567.

NOTE: data and weights are indicative and not binding. Tabarelli reserves the right to make any changes it deems appropriate.



T409 2CE

ELECTRIC
MATERIAL
HANDLER

TECHNICAL CHARACTERISTICS

MOTOR AC electric motor, power 1 x 50kW, controlled by power circuit

BATTERIES 2x1240Ah – 80V
MOTOR SPEED (RPM) ADJUSTMENT Selector switch with 4 operating modes

HYDRAULIC SYSTEM

Main pump Variable displacement axial piston pump
Max flow rate 180 l/min (at 2250 rpm)
Max pressure 300 bar
Adjustment Load sensing with constant power regulator and pressure cut-off function
Heat exchanger Side-by-side element oil with by-pass valve
Filter Partial flow on return to tank
Tank capacity 230l

TURRET ROTATION

Motor Axial piston with load-sensing manifold element
Gearbox Planetary 2-stage
Fifth wheel double-row ball bearing slewing ring made of special steel, with hardened inner gear
Rotation speed 0-8 rpm

CAB

Operator cab Spacious and comfortable, heated, soundproof, **with hydraulic scissor lifting system. Operator view approx. 5.3 metres from the ground Front protective grille and. 5 LED work lights**
Guide rail **Push-button electric system on servo or power steering**
Seat **GRAMMER** “gran comfort” with 6 settings and weight-adjustable suspension
Dashboard Wide colour display with text and graphic symbols to control the main machine functions, alarms and data
Main cross-motion servo-controls Built into the armrests with cross movement
Travel control 2-lever pedal
Auxiliary movements Electric and electric-hydraulic control

UNDERCARRIAGE

Shifting Axial piston motor with starting and braking control valve
Change 2-speed with electro-hydraulic control
Axles **Two-wheel drive** with large industrial axles and planetary gearbox in the hubs. Front oscillating steering axle with hydraulic locking cylinders
Rims 7.00/20 with 10 holes
Tires 8 super-elastic solid tyres 12.00/20
Brake Disc parking
Speed
1^ 0-4 km/h
2^ 0-10 km/h
Blade **1 front blade** with stabilizer function
Stabilisers **2 hydraulic rear stabilisers** with 90° opening, articulated feet and chrome-plated rod protections
OPTIONAL Cart with **4 stabilisers** (2 front and 2 rear) **without front loader**

BOOM
Structure Steel, monolithic high-strength, in 2 elements with monolithic secondary
Length **9,2 to 10m optional (9.5m with selector boom)**
Bushings and pins Made of special steel for concrete
Cylinders Two cylinders on the 1st arm and one cylinder on the 2nd arm with hydraulic braking

EQUIPMENT Grab for scrap **model RR560 with 5 blades**
RECOMMENDED Grab for scrap **model RV400 with 6 blades**
WEIGHT **about 23-24 ton in working order**
SOUND LEVEL **NOISE REDUCTION** (Dir 2000/14/CE - 2005/88/CE)
Sound pressure level at driving position LpA 72 dB

MEASURING SYSTEM FOR MOVEMENT **MACHINERY DIRECTIVE** (Dir 2006/42/CE)
Electronic monitoring device for the stability of the machine according to the loads moved and their position with warning of danger by means of acoustic and light signals, blocking of movements upon reaching of stability limits.

The manufacturer reserves the right to make changes to the products or their specifications

> T409-2CE



OFFICINA MECCANICA F.LLI TABARELLI S.P.A.

VIA CARLO ALBERTO DALLA CHIESA, 2

37060 - MOZZECANE (VR) - ITALY

TEL. +39 045 7930007

INFO@TABARELLI.COM

WWW.TABARELLI.COM

gasweb.it

TABARELLI

FOR A BETTER WORK

