

# T510

## MATERIAL HANDLER



75 YEARS OF EXPERIENCE,  
A DRIVING FORCE,  
PROJECTED INTO THE FUTURE

**TABARELLI**





# T510

## WHEELED INDUSTRIAL MATERIAL HANDLER

Top performance





## > Strength and Resistance

A lifting force is ineffective if it is not balanced and supported by a suitable structure. The T510 boasts both characteristics. The large ballast on the slewing drive and the counterweights on the carriage provide excellent stability, making it easier for the operator to load the machine onto wheels without having to stabilize it in a fixed position.

## > Comfortable Control

In order to increase its productivity, the material handler must perform rapid and precise movements simultaneously. In fact, speed alone is not enough. The operator must be able to control the movements easily, without causing shocks or tears that affect the load's comfort, stability, and grip. The T510's hydraulic "load sensing" system, with its electronic flow control and finely tuned components, enables perfect, progressive, and controlled movements from minimum to maximum speed.

## > Reliability and Maintenance

Suitable maintenance is important for the proper operation of a machine and to ensure its reliability. For this reason, access to the T510's major maintenance points was made as convenient as possible.

Furthermore, the display shows reports of scheduled maintenance timelines, which makes executing them at the correct time easier.

# THE MATERIAL HANDLER THAT STRIKES THE RIGHT BALANCE BETWEEN STRENGTH, STABILITY, AND RANGE OF ACTION!

With over **75 years of experience** designing and manufacturing wheeled **material handlers** for picking up and handling scrap iron, metals, and industrial waste, we have a proven track record of reliability.

All our material handlers are designed and manufactured to ensure: great ease of use, low maintenance, and **high production efficiency**.



## > TOP PERFORMANCE

### **The best performance combined with Power and Efficiency**

An uncompromising material handler that is designed and manufactured to deliver top class performance. Speed, power, stability and a wide range of action make the T510 a material handler suitable for handling scrap, bodywork and medium-sized timber.

We designed this machine to deliver optimal performance by combining powerful engines with electronically managed hydraulic "load sensing" systems. Depending on how the engine is used and the request of the operator, the maximum possible loading capacity is always delivered.



STRONG, POWERFUL,  
STABLE WITH  
> FULL VISIBILITY



In addition to power, we wanted to make this machine strong and stable. The T510's considerable range of action is achieved through its undercarriage counterweights and generous ballast, which allow it to maintain excellent stability while maximizing its lifting capacity. The scissor-type cab lifting system and hydraulic suspension also allow the operator to have full visibility of the loading area and maximize the machine's performance.



12 TON



27-29 TON

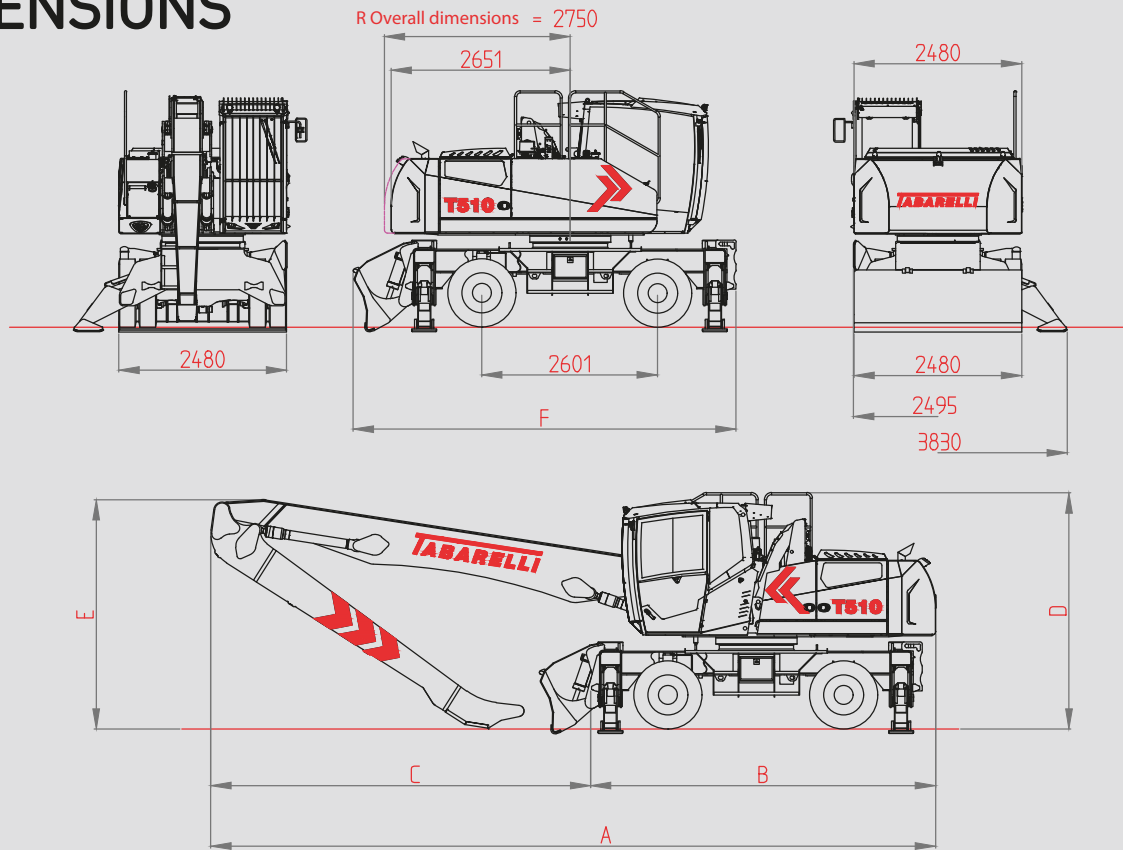


175 HP



10,2-13 M

# DIMENSIONS



dimensions mm	10.2 m version			11.6 m version			13 m version			□□ = BLADE + 2 OUTRIGGERS □□ = 4 OUTRIGGERS □□□ = BLADE + 4 OUTRIGGERS
	□□	□□	□□□	□□	□□	□□□	□□	□□	□□□	
A	9165	9165	9670	10010	10010	10010	10720	10720	10720	
B	5500	5105	5480	5500	5105	5810	5500	5105	5810	
C	3665	4060	4190	4510	4905	4200	5220	5615	4910	
D	3500	3500	3500	3500	3500	3500	3500	3500	3500	
E	2530	2530	2530	3240	3240	3240	3400	3400	3400	
F	5305	4890	5665	5305	4890	4890	5305	4890	5665	

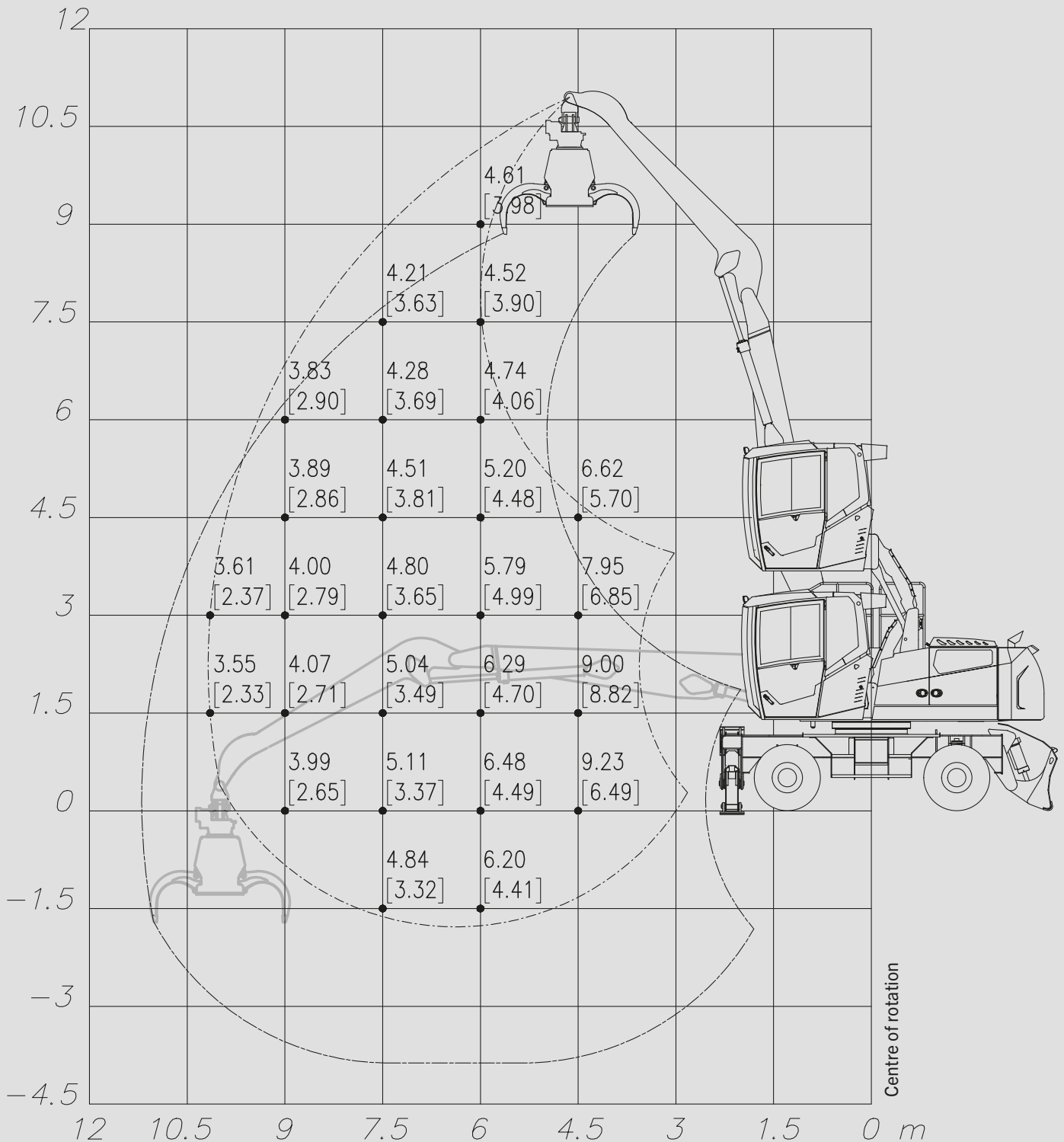
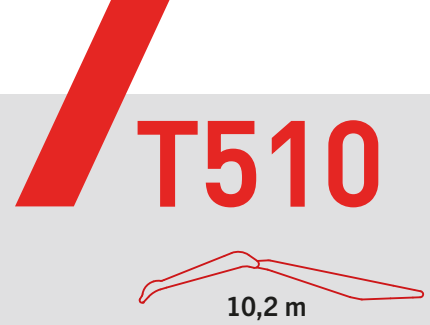
## > EQUIPMENT STANDARD

- > Front blade
- > Rear outriggers
- > All-wheel drive
- > 2-speed gearbox
- > Oscillating axle with integrated hydraulic locking
- > Electric or hydraulic steering system
- > Super-elastic solid tyres
- > Scissor-type cab lifting system
- > In-cab heating
- > Air conditioning system with forced recirculation
- > Car stereo with Bluetooth hands-free function
- > 5 LED lights
- > Boom with hydraulic extension, length 10.2 m  
Range of action with equipment 11.2m
- > Automatic greasing system
- > Remote support
- > Scheduled maintenance

## < EQUIPMENT OPTIONAL

- < Chassis equipped with 4 outriggers
- < Chassis equipped with 4 outriggers + front blade
- < Magnetic lifting system
- < Mid-boom LED lights
- < Rear and/or side camera
- < Pneumatic seat
- < Weighing system
- < Centralised carriage greaser
- < Boom with hydraulic extension 11.6 m.  
Range of action with equipment 12.6 m
- < Boom with hydraulic extension 13 m.  
Range of action with equipment 14 m

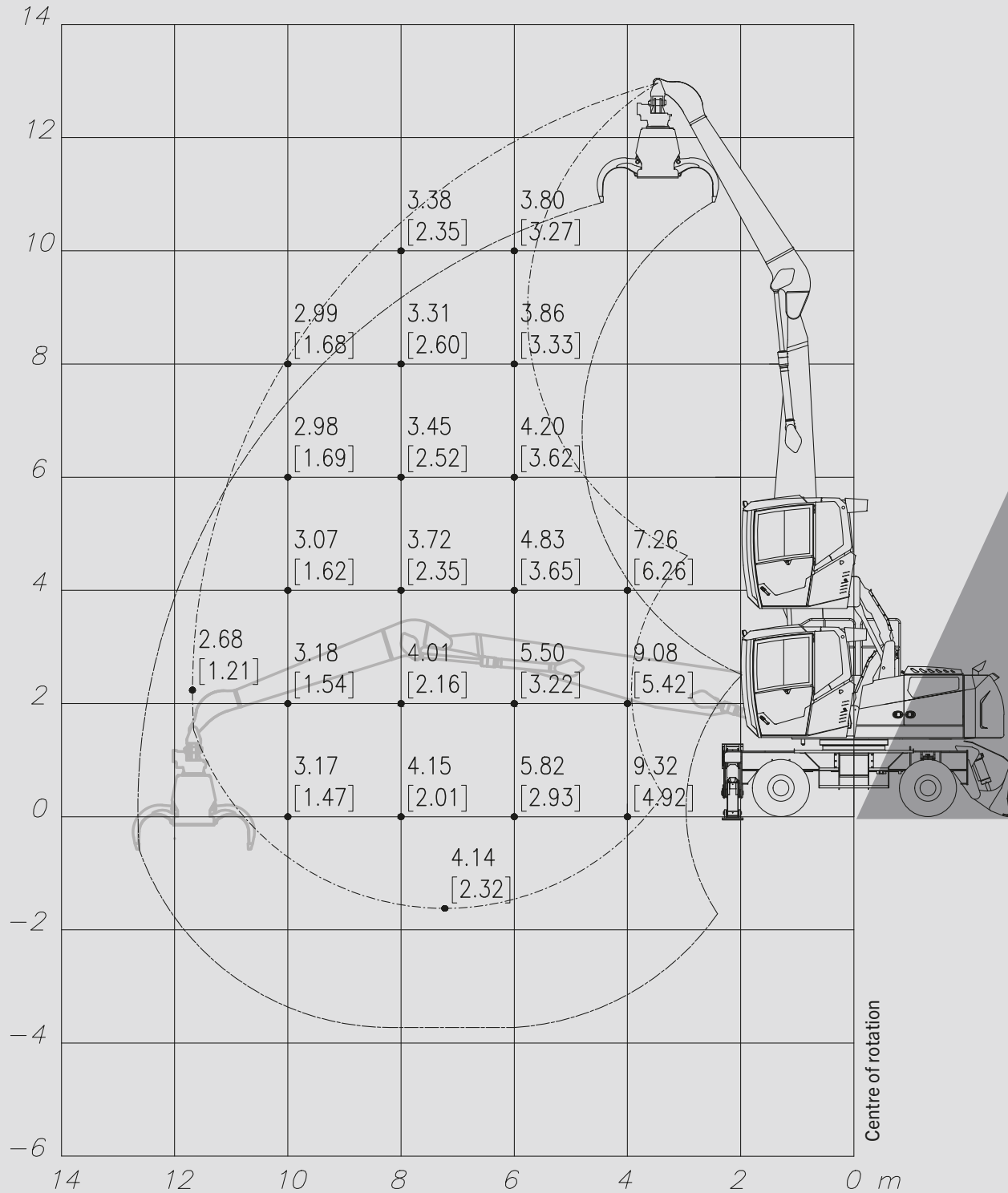
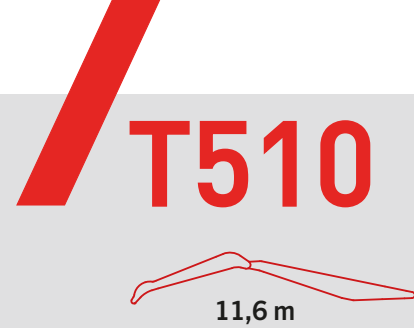
# 10.2 M BOOM MOVEMENT DIAGRAM



Lifting capacities are specified in tonnes and apply to the end of the half boom (excluding accessories). The value in square brackets indicates the load capacity on wheels at 360°, while the other value indicates the load capacity with the stabilisers lowered with 360° adjustment. These values correspond to 75% of the tipping load or 87% of the hydraulic lifting force, as set out in ISO 10567.

NOTE: data and weights are indicative and not binding. Tabarelli reserves the right to make any changes it deems appropriate.

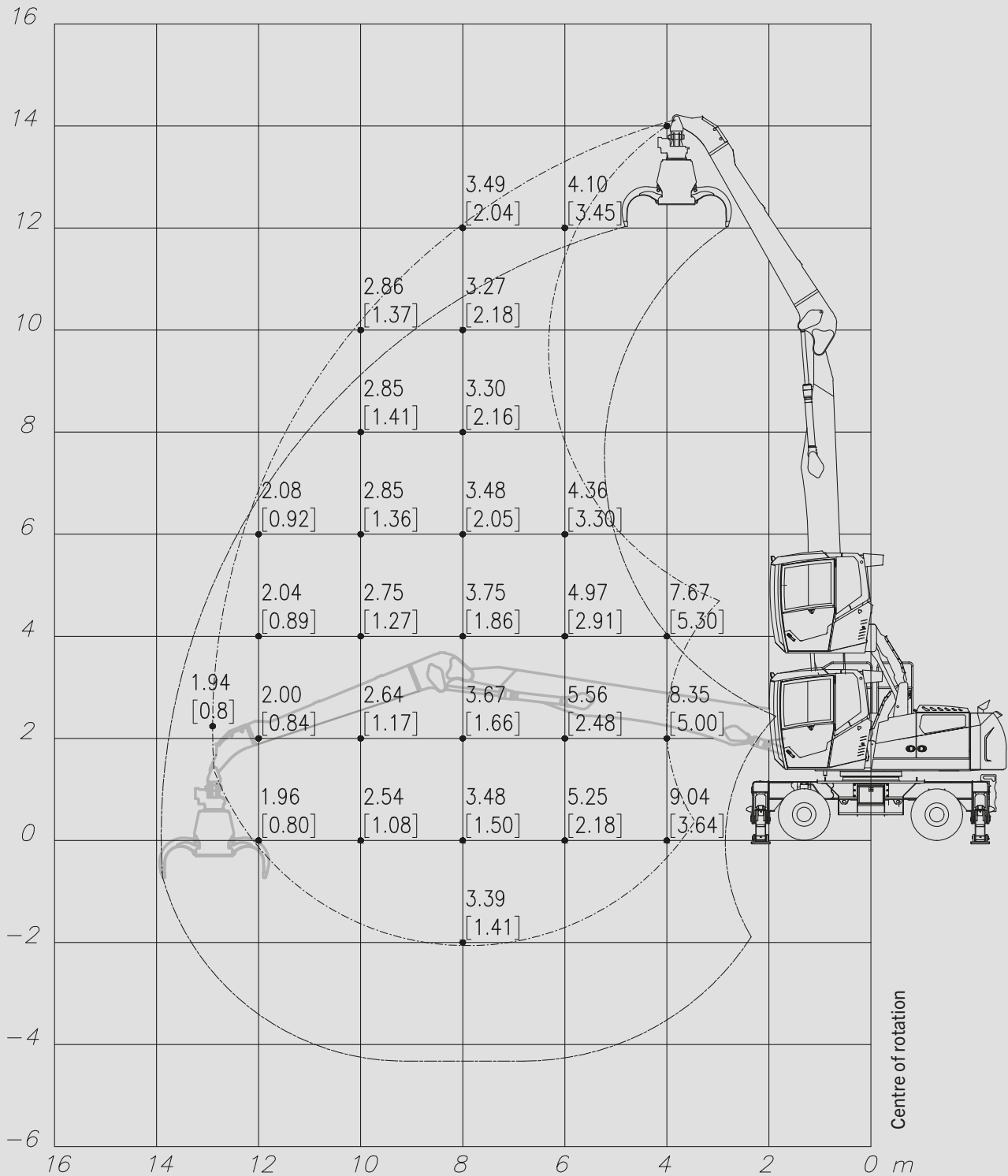
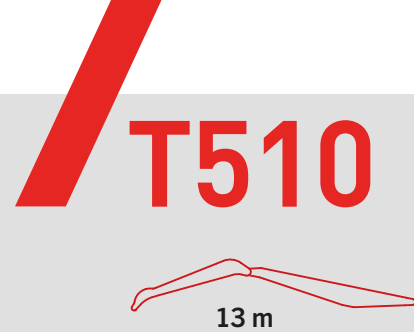
# 11.6 M BOOM MOVEMENT DIAGRAM



Lifting capacities are specified in tonnes and apply to the end of the half boom (excluding accessories). The value in square brackets indicates the load capacity on wheels at 360°, while the other value indicates the load capacity with the stabilisers lowered with 360° adjustment. These values correspond to 75% of the tipping load or 87% of the hydraulic lifting force, as set out in ISO 10567.

NOTE: data and weights are indicative and not binding. Tabarelli reserves the right to make any changes it deems appropriate.

# 13 M BOOM MOVEMENT DIAGRAM



Lifting capacities are specified in tonnes and apply to the end of the half boom (excluding accessories). The value in square brackets indicates the load capacity on wheels at 360°, while the other value indicates the load capacity with the stabilisers lowered with 360° adjustment. These values correspond to 75% of the tipping load or 87% of the hydraulic lifting force, as set out in ISO 10567.

NOTE: data and weights are indicative and not binding. Tabarelli reserves the right to make any changes it deems appropriate.

# TECHNICAL SPECIFICATIONS

## ENGINE

<b>Tipo</b>	CUMMINS B4.5 (U.E. StageV/U.S. Tier4f)
<b>Displacement</b>	4.5 l
<b>Max. Power</b>	129 kW (175 HP)
<b>Cooling</b>	liquid cooled
<b>Air filter</b>	Two-stage dry, with cyclone pre-filter e
<b>Tank Capacity</b>	280 l
<b>ADBLUE Tank</b>	38 l
<b>Electrical system</b>	24 V
<b>Engine speed adjustment</b>	Via button. Auto-Idle function (return to idle during inactivity)

## HYDRAULIC SYSTEM

<b>Main pump</b>	variable displacement axial piston pump with pressure cutting function and oil flow adjustment according to demand
<b>Delivery rate</b>	310 l/min
<b>Adjustment</b>	Load Sensing con gestione elettronica della potenza assorbita in base al numero di giri motore impostato
<b>Exchanger</b>	Water/air/oil with side-by-side elements and a flow-reversal fan, which is controlled by a dedicated hydraulic pump, for cooling and cleaning the radiant masses.
<b>Filtration</b>	complete return filter to the tank
<b>Tank capacity</b>	380 l

## SLEWING DRIVE

<b>Motor</b>	with axial pistons and Load Sensing distributing element and integrated protection valves
<b>Gearbox</b>	2-stage reduction planetary gearbox
<b>Slewing ring</b>	double-row ball bearing slewing ring, made of hardened inner gear
<b>Rotation speed</b>	0-7 revs/min

## CAB

<b>Operator's cab</b>	spacious and comfortable, heated, soundproofed, with hydraulic scissor-type lifting system. Operator's view up to 5.3 m Air conditioning system with 3-speed fan and adjustable vents with dust pre-filter. Front and rear guards with 90° opening.
<b>Drive</b>	electrical with button on servo-control or with hydraulic drive
<b>Seat</b>	with 6 settings and weight-adjustable suspension
<b>Dashboard</b>	Wide colour display with text and graphic symbols to control the main machine functions, alarms and data
<b>Main servo-controls</b>	integrated in the arm rests with cross movement
<b>Shift control</b>	2 levers
<b>Auxiliary movements control</b>	electric and electric-hydraulic control

## UNDERCARRIAGE

<b>Shifting</b>	variable displacement axial piston motor with integrated starting and braking control valves
<b>Drive</b>	2-speed transmission with electro-hydraulic control
<b>Axles</b>	All-wheel drive with strong steering axles, with 10 columns and planetary gearbox in the hubs. Steering and oscillating front axle with hydraulic locking cylinders and fixed rear axle
<b>Pitch</b>	2.6 m
<b>Rims</b>	7.50/20 with 10 holes
<b>Tyres</b>	8 super-elastic solid tyres 10.00/20
<b>Brake</b>	disc parking brake
<b>Speed</b>	Stage 1 - 0-5 km/h Stage 2 - 0-15 km/h

**BOOM**  
**Structure** made of high-strength steel  
**Length** 10.2/11.6/13 m  
**Bushings and pins** made of case-hardening steel  
**Cylinders** double cylinders on 1st and 2nd boom with hydraulic brake

**RECOMMENDED EQUIPMENT** Grab for WASTE model RR650 with 5 blades  
 Grab for SCRAP model RV400/rv500 with 6 blades

**WEIGHT** 27-29 tons, depending on the configuration

**SOUND LEVEL NOISE REDUCTION (Directive 2000/14/EC - 2005/88/EC)**

**SOUND PRESSURE LEVEL** LpA 77 dB (A) at driving position

**MOVEMENT METER MACHINERY DIRECTIVE (Directive 2005/88/EC)**  
 Electronic device used to monitor the stability of the machine according to the handled loads and their position with warning of danger by means of acoustic and light signals, blocking of movements upon reaching of stability limits.

*The manufacturer reserves the right to make changes to the products or their specifications.*

# > T510



OFFICINA MECCANICA F.LLI TABARELLI S.P.A.

VIA CARLO ALBERTO DALLA CHIESA, 2

37060 - MOZZECANE (VR) - ITALY

TEL. +39 045 7930007

INFO@TABARELLI.COM

WWW.TABARELLI.COM

gasweb.it

**TABARELLI**  
FOR A BETTER WORK

