

T815

MATERIAL HANDLER



75 YEARS OF EXPERIENCE,
A DRIVING FORCE,
PROJECTED INTO THE FUTURE

TABARELLI





T815

WHEELED INDUSTRIAL MATERIAL HANDLER



The best cost/performance ratio

> High Stability and a Wide Range of Action

The new T815 material handler is designed to offer the best cost/performance ratio, high stability, and great range of action. It is equipped with all the latest-generation accessories, both for the management of the engine and the hydraulic system, and for the complete display of the machine status, data collection, and connectivity. The material handler can be set up in a way that suits all your needs, thanks to the multiple options available.

> Complete Equipment

The T815's versatility is enhanced by its complete equipment. There are numerous accessories and pieces of equipment available to adapt the machine to various situations depending on the conditions of use, the environment, or the material being handled. The cab and operator's workstation are also designed to provide a comfortable and efficient workplace.

The generous space, excellent visibility, air conditioning, and quietness guarantee the operator the best conditions for carrying out their work.

> Reliability and Maintenance

The selection of the most reliable and tested components and construction solutions, access spaces, and layout of elements allows for simple maintenance and ensures the handler's perfect efficiency throughout its service life. Furthermore, the prompt reporting of upcoming expiring operations on the display guarantees the timely and organized execution of maintenance operations, ensuring the optimal performance and efficiency of the material handler.

THE MATERIAL HANDLER WITH THE BEST COST-PERFORMANCE RATION!

With over **75 years of experience** designing and manufacturing wheeled **material handlers** for picking up and handling scrap iron, metals, and industrial waste, we have a proven track record of reliability.

All our material handlers are designed and manufactured to ensure: great ease of use, low maintenance, and **high production efficiency**.



TOP PERFORMANCE > WITHOUT WASTE

Ready and progressive responses, easy and intuitive controls

The diesel engine and hydraulic system are balanced to deliver high performance without wasting power or fuel. Ready and progressive responses, easy and intuitive controls, and various adjustable and customizable operating parameters enable you to adapt the performance to the task at hand, ensuring maximum operational efficiency.

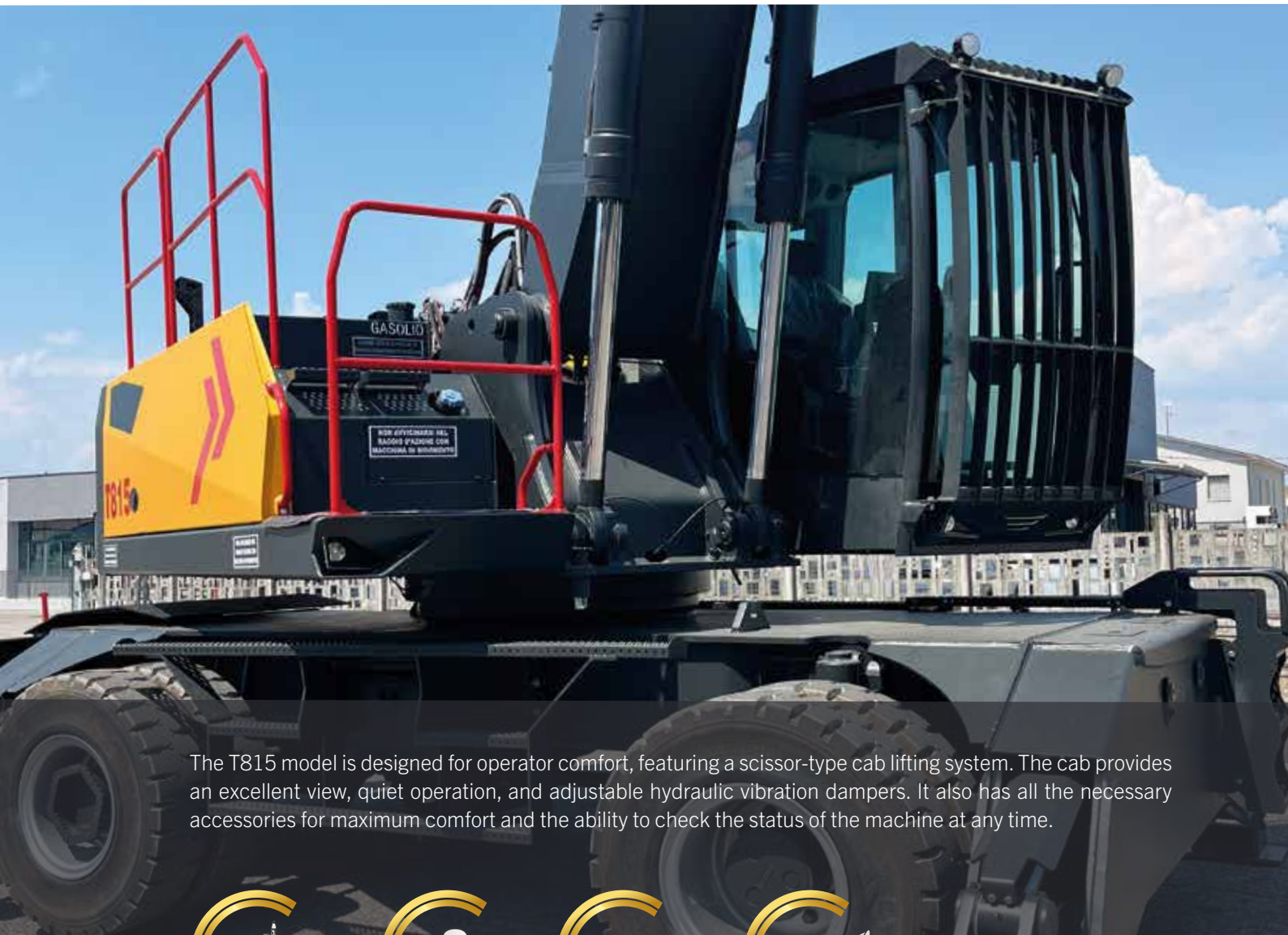


Quick kit for routine engine maintenance



New scissor-type cab lifting system

EXCELLENT VISIBILITY AND QUIETNESS FOR >FULL CONTROL



The T815 model is designed for operator comfort, featuring a scissor-type cab lifting system. The cab provides an excellent view, quiet operation, and adjustable hydraulic vibration dampers. It also has all the necessary accessories for maximum comfort and the ability to check the status of the machine at any time.



14 TON



38-40 TON

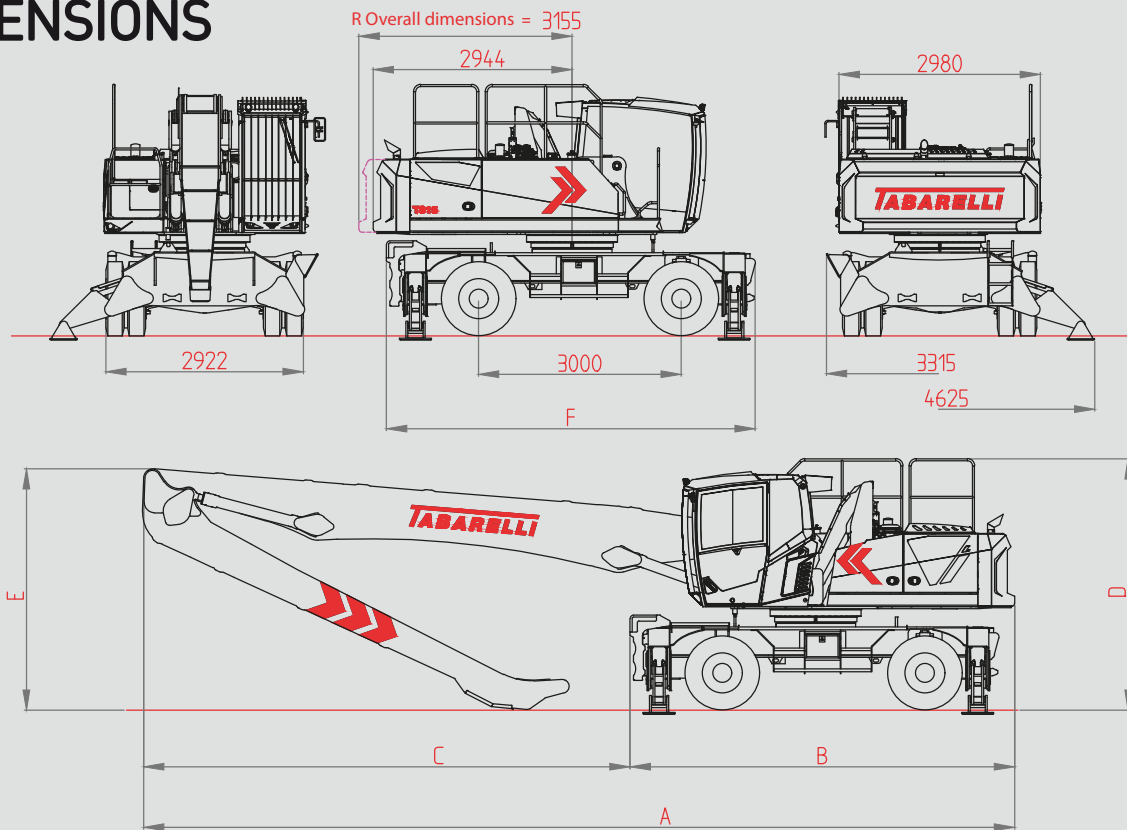


205 HP



14-15-16,5 M

DIMENSIONS



dimensions mm	14 m version		15 m version		16,5 m version		
	⊥⊥	⊥⊥⊥	⊥⊥	⊥⊥⊥	⊥⊥	⊥⊥⊥	
A	11440	11910	11915	12390	12890	12890	⊥⊥ = BLADE + 2 OUTRIGGERS
B	5690	6245	5690	6245	5690	6360	⊥⊥ = 4 OUTRIGGERS
C	5750	5665	6225	6145	7200	6530	⊥⊥⊥ = BLADE + 4 OUTRIGGERS
D	3720	3720	3720	3720	3720	3720	
E	3445	3445	3480	3480	3575	3575	
F	5460	6245	5460	6245	5460	6245	

> EQUIPMENT STANDARD

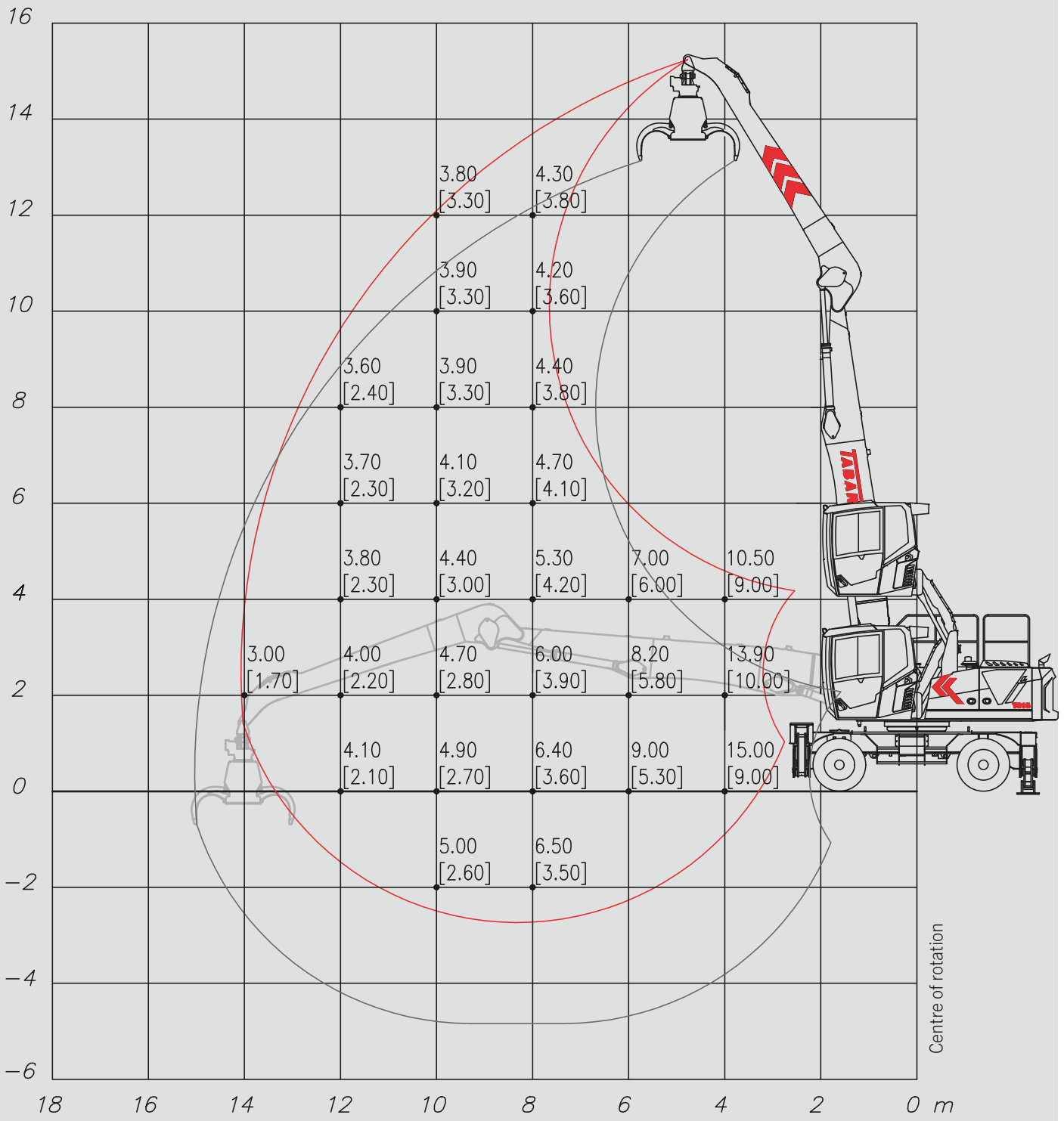
- > Rear outriggers
- > Front outriggers
- > All-wheel drive
- > Speed gearbox
- > Oscillating rear axle with hydraulic locking
- > Electric or hydraulic steering system
- > Super-elastic solid tyres
- > Scissor-type cab lifting system
- > In-cabin heating
- > Air conditioning system with forced recirculation
- > Car stereo with Bluetooth hands-free function
- > 5 LED lights
- > Boom with hydraulic extension, length 15 m. Range of action with equipment 16 m
- > Automatic greasing system
- > Remote support
- > Scheduled maintenance

< EQUIPMENT OPTIONAL

- < Frame with 4 outriggers + front blade
- < Magnetic lifting system
- < Elevating cab with FlyCab system, Op. View 6 m
- < Mid-boom LED lights
- < Rear and/or side camera
- < Pneumatic seat
- < Weighing system
- < Centralised carriage greasing system
- < Boom with hydraulic extension, total length 14 m. Range of action with equipment 15 m
- < Boom with hydraulic extension 16.5m. Range of action with equipment 17.5m

DIAGRAM BOOM MOVEMENT 14 M

T815 MATERIAL HANDLER

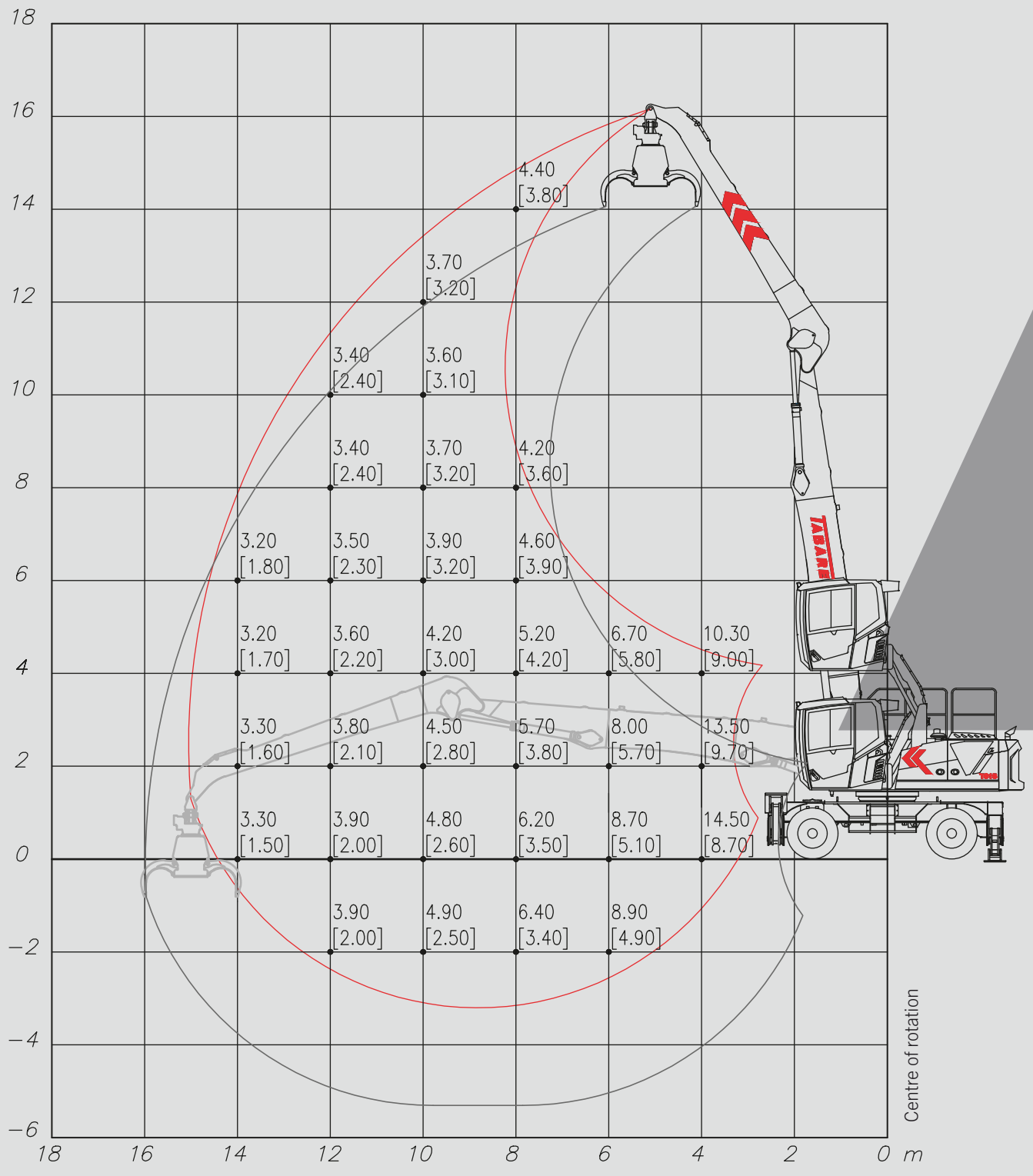


Lifting capacities are specified in tonnes and apply to the end of the half boom (excluding accessories). The value in square brackets indicates the load capacity on wheels at 360°, while the other value indicates the load capacity with the stabilisers lowered with 360° adjustment. These values correspond to 75% of the tipping load or 87% of the hydraulic lifting force, as set out in ISO 10567.

NOTE: data and weights are indicative and not binding. Tabarelli reserves the right to make any changes it deems appropriate.

DIAGRAM BOOM MOVEMENT 15 M

T815 MATERIAL HANDLER

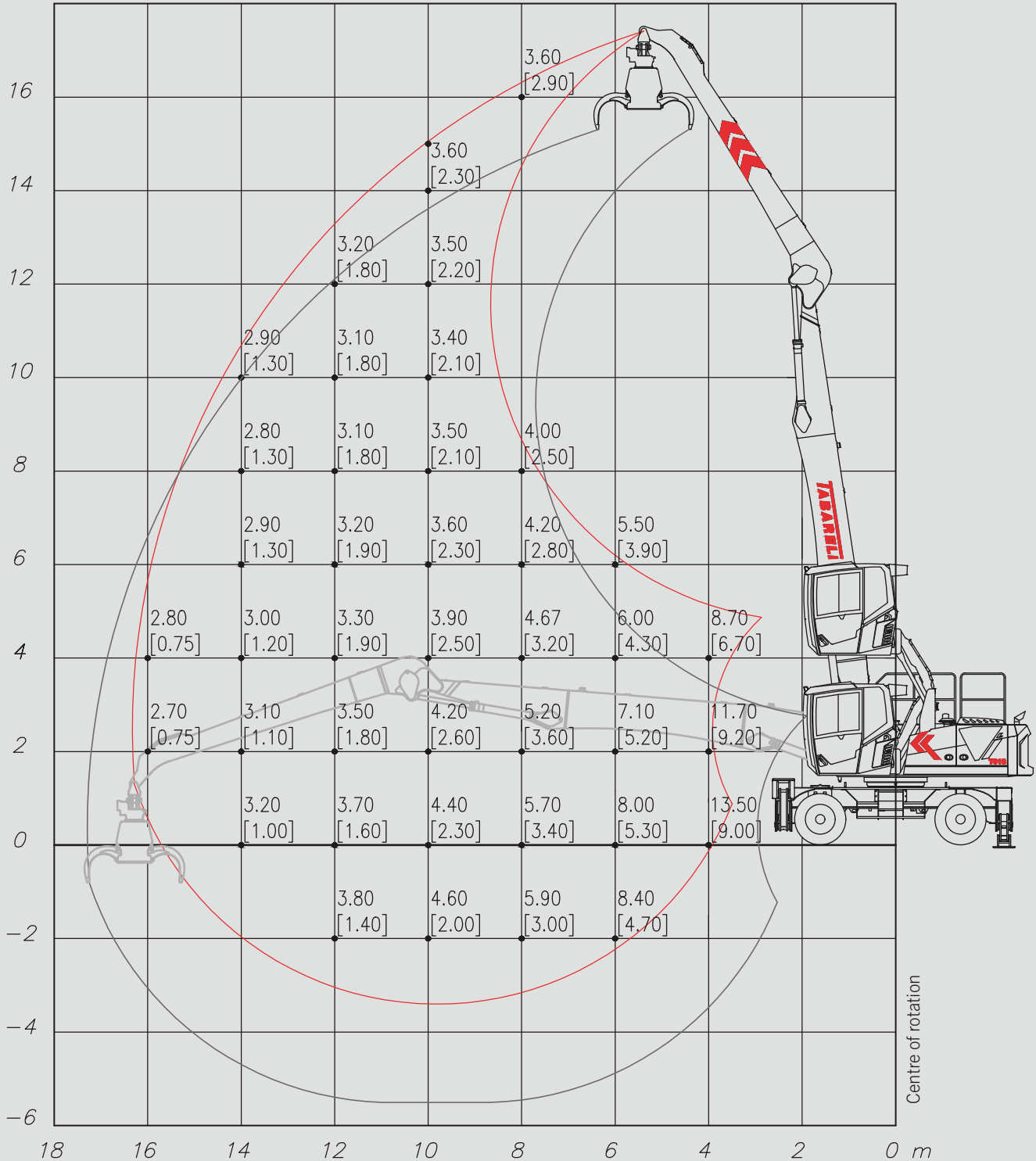


Lifting capacities are specified in tonnes and apply to the end of the half boom (excluding accessories). The value in square brackets indicates the load capacity on wheels at 360°, while the other value indicates the load capacity with the stabilisers lowered with 360° adjustment. These values correspond to 75% of the tipping load or 87% of the hydraulic lifting force, as set out in ISO 10567.

NOTE: data and weights are indicative and not binding. Tabarelli reserves the right to make any changes it deems appropriate.

DIAGRAM BOOM MOVEMENT 16,5 M

T815 MATERIAL HANDLER



Lifting capacities are specified in tonnes and apply to the end of the half boom (excluding accessories). The value in square brackets indicates the load capacity on wheels at 360°, while the other value indicates the load capacity with the stabilisers lowered with 360° adjustment. These values correspond to 75% of the tipping load or 87% of the hydraulic lifting force, as set out in ISO 10567.

NOTE: data and weights are indicative and not binding. Tabarelli reserves the right to make any changes it deems appropriate.

TECHNICAL SPECIFICATIONS

ENGINE

Model	CUMMINS QSB6.7 (U.E. StageV/U.S. Tier4f)
Displacement	6,7 l
No. of cylinders	6
Power	149 kW (205 HP)
Cooling	liquid cooled
Air filter	2-stage dry filter, with cyclone pre-filter
Tank Capacity	380 l
ADBLUE Tank	58 l
Electrical system	24 V
Engine speed adjustment	with button. Auto-Idle function (return to idle during inactivity)

HYDRAULIC SYSTEM

Main pump	variable displacement axial piston pump with pressure cutting function and oil flow adjustment according to demand
Delivery rate	430 l/min
Adjustment	load Sensing with electronic management of the power consumption according to the engine speed set.
Heat exchanger	Water/air/oil with side-by-side elements and a flow-reversal fan, which is controlled by a dedicated hydraulic pump, for cooling and cleaning the radiant masses
Filtration	complete return filter to the tank
Tank capacity	550 l

SLEWING DRIVE

Motor	axial piston motor with load sensing and integrated pressure relief valves
Gearbox	2-stage reduction planetary gearbox
Slewing ring	double-row ball bearing slewing ring, made of special steel with hardened inner gear
Rotation speed	0-7 revs/min

CAB

Operator's cab	spacious and comfortable, heated, soundproofed, with hydraulic scissor-type lifting system. Operator's view up to 5.8 m. Air conditioning system with 3-speed fan and adjustable vents with dust pre-filter. Front and top grille guard with 90° opening
Drive	hydraulic steering or with electric control on servo-control
Seat	with 6 settings and weight-adjustable suspension
Dashboard	wide colour display with text and graphic symbols to control the main machine functions, alarms and data. Additional functions: CE standards certified movement limiters integrated in the arm rests with cross movement
Main servo-controls	integrated in the arm rests with cross movement
Shift control	2 levers
Auxiliary movements control	electric and electric-hydraulic control

UNDERCARRIAGE

Shifting	variable displacement axial piston Rexroth motor with integrated starting and braking control valves
Drive	2-speed transmission with electro-hydraulic control
Axles	All-wheel drive with strong steering axles, with 12 columns and planetary gearbox in the hubs. Fixed steering front axle and oscillating rear axle with hydraulic locking cylinders
Pitch	3 m
Rims	8.00/20 with 10 holes

UNDERCARRIAGE

Tyres 8 super-elastic solid tyres 12.00/20
Brake disc parking brake
Speed Stage 1 - 0-5 km/h
Stage 2 - 0-15 km/h

BOOM

Structure made of high-strength steel
Length 14/15/16.5 m
Bushings and pins made of case-hardening steel
Cylinders double cylinders on 1st and 2nd boom with hydraulic brake

RECOMMENDED EQUIPMENT

grab for WASTE model RR800 with 6 blades
grab for SCRAP model RV550/RV 600 with 6 blades

WEIGHT SOUND LEVEL

about 38-40 ton in working order
NOISE REDUCTION (Directive 2000/14/EC - 2005/88/EC)

SOUND PRESSURE LEVEL

LpA 77 dB (A) at driving position

MOVEMENT METER

MACHINERY DIRECTIVE (Directive 2005/88/EC)

Electronic device used to monitor the stability of the machine according to the handled loads and their position with warning of danger by means of acoustic and light signals, blocking of movements upon reaching of stability limits.

The manufacturer reserves the right to make changes to the products or their specifications.

> T815



OFFICINA MECCANICA F.LLI TABARELLI S.P.A.

VIA CARLO ALBERTO DALLA CHIESA, 2

37060 - MOZZECANE (VR) - ITALY

TEL. +39 045 7930007

INFO@TABARELLI.COM

WWW.TABARELLI.COM

TABARELLI
FOR A BETTER WORK

